



Sun™ Control Station 2.2 Software Installer Module

Sun Microsystems, Inc.
www.sun.com

Part No. 819-0447-10
December 2004, Revision A

Submit comments about this document at: <http://www.sun.com/hwdocs/feedback>

Copyright 2004 Sun Microsystems, Inc., 4150 Network Circle, Santa Clara, California 95054, U.S.A. All rights reserved.

Sun Microsystems, Inc. has intellectual property rights relating to technology that is described in this document. In particular, and without limitation, these intellectual property rights may include one or more of the U.S. patents listed at <http://www.sun.com/patents> and one or more additional patents or pending patent applications in the U.S. and in other countries.

This document and the product to which it pertains are distributed under licenses restricting their use, copying, distribution and decompilation. No part of the product or of this document may be reproduced in any form by any means without prior written authorization of Sun and its licensors, if any.

Third-party software, including font technology, is copyrighted and licensed from Sun suppliers.

Parts of the product may be derived from Berkeley BSD systems, licensed from the University of California. UNIX is a registered trademark in the U.S. and in other countries, exclusively licensed through X/Open Company, Ltd.

Sun, Sun Microsystems, the Sun logo, Java, JavaServer Pages, JSP, JumpStart, Netra, Solaris, Sun Cobalt, Sun Cobalt RaQ, Sun Cobalt CacheRaQ, Sun Cobalt Qube, Sun Fire and Ultra are trademarks or registered trademarks of Sun Microsystems, Inc. in the United States and in other countries.

All SPARC trademarks are used under license and are trademarks or registered trademarks of SPARC International, Inc. in the U.S. and in other countries. Products bearing SPARC trademarks are based upon an architecture developed by Sun Microsystems, Inc.

Netscape and Mozilla are trademarks or registered trademarks of Netscape Communications Corporation in the United States and other countries.

The OPEN LOOK and Sun™ Graphical User Interface was developed by Sun Microsystems, Inc. for its users and licensees. Sun acknowledges the pioneering efforts of Xerox in researching and developing the concept of visual or graphical user interfaces for the computer industry. Sun holds a non-exclusive license from Xerox to the Xerox Graphical User Interface, which license also covers Sun's licensees who implement OPEN LOOK GUIs and otherwise comply with Sun's written license agreements.

U.S. Government Rights—Commercial use. Government users are subject to the Sun Microsystems, Inc. standard license agreement and applicable provisions of the FAR and its supplements.

DOCUMENTATION IS PROVIDED "AS IS" AND ALL EXPRESS OR IMPLIED CONDITIONS, REPRESENTATIONS AND WARRANTIES, INCLUDING ANY IMPLIED WARRANTY OF MERCHANTABILITY, FITNESS FOR A PARTICULAR PURPOSE OR NON-INFRINGEMENT, ARE DISCLAIMED, EXCEPT TO THE EXTENT THAT SUCH DISCLAIMERS ARE HELD TO BE LEGALLY INVALID.

Copyright 2004 Sun Microsystems, Inc., 4150 Network Circle, Santa Clara, California 95054, États-Unis. Tous droits réservés.

Sun Microsystems, Inc. a les droits de propriété intellectuelle relatants à la technologie qui est décrite dans ce document. En particulier, et sans la limitation, ces droits de propriété intellectuelle peuvent inclure un ou plus des brevets américains énumérés à <http://www.sun.com/patents> et un ou les brevets plus supplémentaires ou les applications de brevet en attente dans les États-Unis et dans les autres pays.

Ce produit ou document est protégé par un copyright et distribué avec des licences qui en restreignent l'utilisation, la copie, la distribution et la décompilation. Aucune partie de ce produit ou document ne peut être reproduite sous aucune forme, par quelque moyen que ce soit, sans l'autorisation préalable et écrite de Sun et de ses bailleurs de licence, s'il y en a.

Le logiciel détenu par des tiers, et qui comprend la technologie relative aux polices de caractères, est protégé par un copyright et licencié par des fournisseurs de Sun.

Des parties de ce produit pourront être dérivées des systèmes Berkeley BSD licenciés par l'Université de Californie. UNIX est une marque déposée aux États-Unis et dans d'autres pays et licenciée exclusivement par X/Open Company, Ltd.

Sun, Sun Microsystems, le logo Sun, Java, JavaServer Pages, JSP, JumpStart, Netra, Solaris, Sun Cobalt, Sun Cobalt RaQ, Sun Cobalt CacheRaQ, Sun Cobalt Qube, Sun Fire et Ultra sont des marques de fabrique ou des marques déposées de Sun Microsystems, Inc. aux États-Unis et dans d'autres pays.

Toutes les marques SPARC sont utilisées sous licence et sont des marques de fabrique ou des marques déposées de SPARC International, Inc. aux États-Unis et dans d'autres pays. Les produits portant les marques SPARC sont basés sur une architecture développée par Sun Microsystems, Inc.

Netscape et Mozilla sont des marques de Netscape Communications Corporation aux États-Unis et dans d'autres pays.

L'interface d'utilisation graphique OPEN LOOK et Sun a été développée par Sun Microsystems, Inc. pour ses utilisateurs et licenciés. Sun reconnaît les efforts de pionniers de Xerox pour la recherche et le développement du concept des interfaces d'utilisation visuelle ou graphique pour l'industrie de l'informatique. Sun détient une licence non exclusive de Xerox sur l'interface d'utilisation graphique Xerox, cette licence couvrant également les licenciées de Sun qui mettent en place l'interface d'utilisation graphique OPEN LOOK et qui en outre se conforment aux licences écrites de Sun.

LA DOCUMENTATION EST FOURNIE «EN L'ÉTAT» ET TOUTES AUTRES CONDITIONS, DÉCLARATIONS ET GARANTIES EXPRESSES OU TACITES SONT FORMELLEMENT EXCLUES, DANS LA MESURE AUTORISÉE PAR LA LOI APPLICABLE, Y COMPRIS NOTAMMENT TOUTE GARANTIE IMPLICITE RELATIVE À LA QUALITÉ MARCHANDE, À L'APTITUDE À UNE UTILISATION PARTICULIÈRE OU À L'ABSENCE DE CONTREFAÇON.



Please
Recycle



Adobe PostScript

Contents

Software Installer Module 1

Software Installer 1

Package File 2

Software Installer Functions 2

Upload 2

Details 3

Edit 3

Reassign OS 3

Delete 3

Install 3

Packages 4

Uploading a Package File 4

Viewing Details of a Package File 5

Add or Remove Supported Operating Systems for a Single Package File 7

Add or Remove Supported Operating Systems for Multiple Package Files 8

Deleting a Package File 9

Installing a Package File 9

Filters 10

Software Installer Module

This document explains the features and services available by using the Software Installer control module, which is part of the Sun™ Control Station software. This module enables you to do the following:

- View package files that are available
- Upload package files from your computer or the Internet to the Control Station
- View details of each package file
- Reassign different operating systems to either a single package file (Edit) or to several package files (Reassign OS)
- Delete package files
- Install package files

You can also use the filter option to narrow the types of package files you want to view and manipulate.

Note – This manual assumes that you understand the basic operation of Sun Control Station software. For an introduction to basic Sun Control Station features like status icons, the Scheduler, and the Task Progress dialog, see the *Sun Control Station 2.2 Administrator Manual*.

Software Installer

After logging in to the Sun Control Station, when you click Software Installer → Packages, the following window opens.

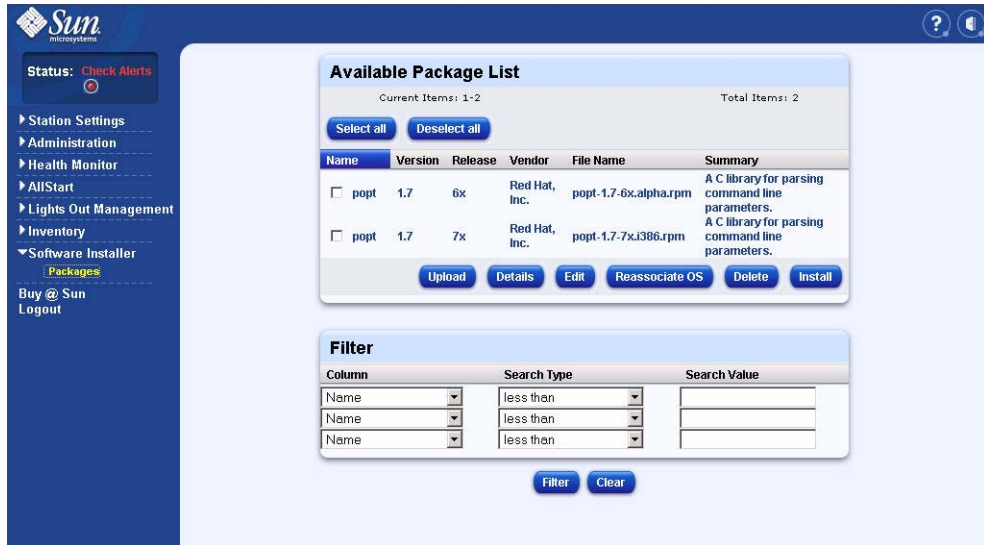


FIGURE 1 Software Installer Module (Packages) Window

Package File

In this manual, the term *package file* refers to a Red Hat Package Manager (RPM) file for Linux-based servers (such as the Sun Fire™ V60x server).

Software Installer Functions

The following sections describe the functions that you can perform with the Software Installer module.

Upload

The Upload function enables you to load a package file from either a local repository or the Internet to the Control Station.

Details

The Details function enables you to view specific information about a package file, such as the name, version, release, vendor, file name, summary and description of the package file, and other relevant package file information.

Edit

The Edit function enables you to add and remove supported operating systems for a single package file.

Reassign OS

Similar to the Edit function, The Reassign OS function enables you to add and remove the supported operating systems for multiple package files.

Delete

The Delete function enables you to remove a package file from the list of available package files. Since the package file is located in the local repository on the Control Station, the entry for that package file is removed from the list of available package files and the package file is deleted from the repository.

Install

The Install function enables you to install package files on selected hosts. The package file is copied from the local repository to the managed host and then installed.

Before installing a package file, you can test the installation and the Control Station performs a preliminary test to verify the correct RPM, checks that the package file is not previously installed, and checks for other general errors.

Packages

The Packages option enables you to manage the package files on local repositories. The Available Package List window shows all of the software packages known by the Sun Control Station. The software packages are stored locally on the Control Station.

For an explanation of the functions that are available under this menu item, see “Software Installer Functions” on page 2.

The following example shows the Available Package List options in the packages portion of the Software Installer window.



FIGURE 2 Available Package List Window

Uploading a Package File

To upload a single package file, do the following:

- 1. Select Software Installer → Packages.**
The Available Package List window appears.
- 2. Select the package file(s) in the list of available package files that you want to use.**
- 3. Click Upload.**

The Upload Package window appears.

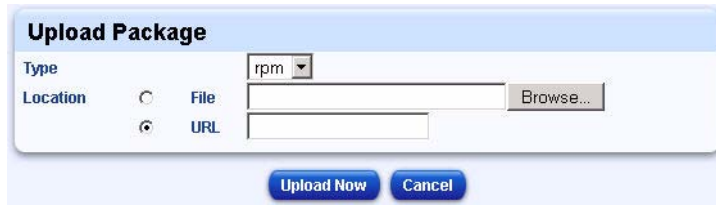


FIGURE 3 Upload Package Window

4. **Select RPM from the Type drop-down menu.**
5. **Click one of the radio buttons and enter the location of the package file.**
 - Enter the path and file name of the package file or click Browse to locate on your computer.
 - Enter a URL beginning with `http://`, `https://` or `ftp://` to download the package file from a location on the Internet.

Note – If the Control Station must pass through a proxy to access the Internet, it uses the proxy settings entered in Station Settings → Settings. If you have not configured these settings, you need to before uploading a package file using a URL. For more information, refer to the *Sun Control Station 2.2 Administrator Manual*.

6. **Click Upload Now.**

The Task Progress dialog appears.
7. **Click either Done or View Events when the upload is complete.**

If you click Done, you are brought to the Edit Package Info window, where you can enter the supported operating systems for the package file you installed.

Viewing Details of a Package File

To view the detailed information about an available package file, do the following:

1. **Select Software Installer → Packages.**

The Available Package List window appears.
2. **Select the package file(s) in the list of available package files that you want to view.**

3. Click Details.

The Detailed Package Info window appears.

| Detailed Package Info | |
|-----------------------|---|
| Name | popt |
| Version | 1.7 |
| Release | 6x |
| Vendor | Red Hat, Inc. |
| File Name | popt-1.7-6x.alpha.rpm |
| Summary | A C library for parsing command line parameters. |
| Description | Popt is a C library for parsing command line parameters. Popt was heavily influenced by the getopt() and getopt_long() functions, allowing more powerful argument expansion. Popt can parse arbitrary argv[] style arrays and automatically set variables based on Popt allows command line arguments to be aliased via configuration files and includes utility functions for parsing arbitrary string shell-like rules. |
| Group | Development/Libraries |
| Size | 342624 |
| Signature | 883f0305003d879bdc219180cddb42a60e11027256009e2138aed0c891fed4e6bbe009691d85d359e7acbf009e3327978f5df155c0 |
| Relocation | |
| Build Date | 1032292772 |
| Build Host | george.devel.redhat.com |
| Source | (none) |
| License | GPL |
| Supported OS | |

FIGURE 4 Detailed Package Info Window

The Detailed Package Info window provides the following information about the package file:

- Name
- Version number
- Release number
- Vendor
- File name
- Summary
- Description
- Group where the package file exists
- Size
- Signature
- Relocation
- Build date
- Build host
- Source
- License type
- Supported operating systems

4. Click Done to return to the Available Package List window.

Note – Detailed information is available for each package file that you chose in the Available Package List window.

Add or Remove Supported Operating Systems for a Single Package File

To add or remove supported operating systems for a single package file, do the following:

1. Select Software Installer → Packages.

The Available Package List window appears.

2. Select the package file in the list of available package files that you want to use.

You can only edit one package file at a time.

3. Click Edit.

The Edit Package Info window opens.

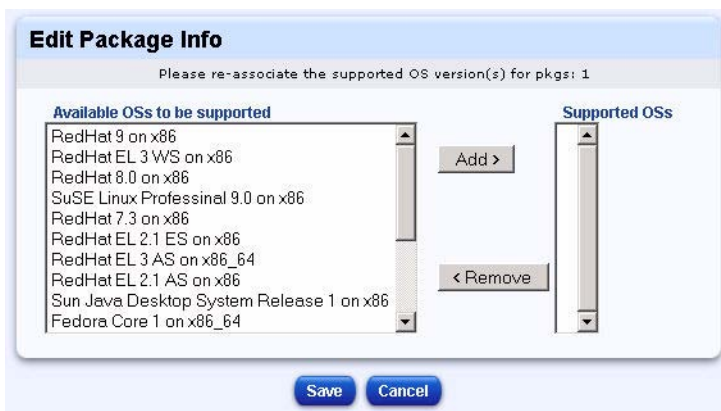


FIGURE 5 Edit Package Info Window

4. Configure the options to set the applicable operating systems:

- **Available OSs to be supported.** Enables you to choose from all the potential operating systems you might use and add the specifically supported operating systems.

- **Supported OSs.** Enables you to remove and change the currently supported operating systems within the particular package file.

5. **Click Save when the edit is complete.**

You are returned to the Available Package List window.

Add or Remove Supported Operating Systems for Multiple Package Files

To add or remove supported operating systems for a multiple package files simultaneously, do the following:

1. **Select Software Installer → Packages.**

The Available Package List window appears.

2. **Select the package file(s) in the list of available package files that you want to use.**

You can edit multiple package files at once.

3. **Click Reassign OS.**

The Edit Package Info window opens.

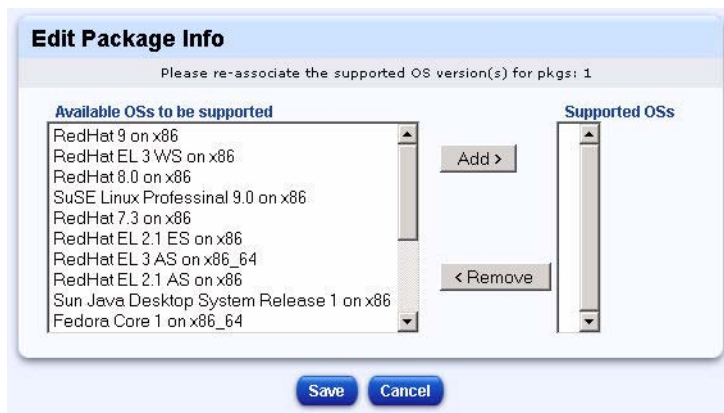


FIGURE 6 Edit Package Info Window

4. **Configure the options to set the applicable operating systems:**

- **Available OSs to be supported.** Enables you to choose from all the potential operating systems you might use and add the specifically supported operating systems.

- **Supported OSs.** Enables you to remove and change the currently supported operating systems within the particular package file(s).

5. Click Save when the edit is complete.

Note – If you previously assigned operating systems to package file(s) using Edit, that information is not retained and you must perform this operation again.

Deleting a Package File

To remove a package file from the list of available package files, do the following:

1. Select Software Installer → Packages.

The Available Package List window appears.

2. Select the package file(s) in the list of available package files that you want to delete.

3. Click Delete.

A confirmation dialog appears, asking you to confirm the package deletion.

4. Click Confirm.

The package file(s) is deleted and you are returned to the Available Package List window.

Installing a Package File

To install a package file, do the following:

1. Select Software Installer → Packages.

The Available Package List window appears.

2. Select the package file(s) in the list of available package files that you want to install.

3. Click Install.

The Select Hosts to Install Packages on window appears.



FIGURE 7 Select Hosts to Install Packages on Window

4. Click the package file(s) you want to install.

You can choose the Select all and Deselect all button depending on your needs.

5. Click Test Install to verify and test package file(s) before installing them.

This option will check the installation's viability and when complete, you click either Done or View Events to return to the installation.

Note – If you selected an operating system that was not supported by the selected package file, an error message appears and you need to update the supported operating systems before continuing.

6. Click Install Now.

The Task Progress dialog appears.

7. Click either Done or View Events when the installation completes or stops.

Note – After you have installed a package file, the system updates the list of installed package files immediately.

Filters

You can use the Filter function to limit the number of package files that are displayed at once in the Available Package List window.

To use the Filter function, do the following:

1. Select Software Installer → Packages.

The Available Package List window appears, with the Filter function accessible in the lower portion of the window, similar to the following.



The screenshot shows a window titled "Filter" with a table and two buttons. The table has three columns: "Column", "Search Type", and "Search Value". Each column has a dropdown menu. The "Column" dropdown is set to "Name", the "Search Type" dropdown is set to "less than", and the "Search Value" column has three empty text boxes. Below the table are two buttons: "Filter" and "Clear".

| Column | Search Type | Search Value |
|--------|-------------|--------------|
| Name | less than | |
| Name | less than | |
| Name | less than | |

Filter Clear

FIGURE 8 Filter Window

2. Choose an option in the Column drop-down list.

The following are available as search criteria in the Column drop-down list:

- Name
- Version number
- Release number
- Vendor
- Package
- Summary

3. Choose an option in the Search Type drop-down list.

The following are available as search criteria in the Search Type drop-down list:

- Less than
- Less than/equal to
- Equal to
- Not equal to
- Greater than/equal to
- Greater than
- Contains
- Doesnt contain

4. Enter an option in the Search Value text box.

You can enter any keywords or terms to help define your search.

5. Click Filter.

The Filter function searches the package files according to your parameters and returns results in a refreshed Available Package List window.

Note – When you click Clear, it refreshes the entire list in the Available Package List window and shows you all available package files. Also, to clear a single filter term, delete the text in the Search Value text box and click Clear.
