



Sun StorEdge™ 3120 SCSI Array Release Notes

Sun Microsystems, Inc.
www.sun.com

Part No. 816-7955-11
November 2004, Revision A

Submit comments about this document at: <http://www.sun.com/hwdocs/feedback>

Copyright © 2004 Dot Hill Systems Corporation, 6305 El Camino Real, Carlsbad, California 92009, USA. All rights reserved.

Sun Microsystems, Inc. and Dot Hill Systems Corporation may have intellectual property rights relating to technology embodied in this product or document. In particular, and without limitation, these intellectual property rights may include one or more of the U.S. patents listed at <http://www.sun.com/patents> and one or more additional patents or pending patent applications in the U.S. and other countries.

This product or document is distributed under licenses restricting its use, copying distribution, and decompilation. No part of this product or document may be reproduced in any form by any means without prior written authorization of Sun and its licensors, if any.

Third-party software is copyrighted and licensed from Sun suppliers.

Parts of the product may be derived from Berkeley BSD systems, licensed from the University of California. UNIX is a registered trademark in the U.S. and in other countries, exclusively licensed through X/Open Company, Ltd.

Sun, Sun Microsystems, the Sun logo, Sun StorEdge, AnswerBook2, docs.sun.com, and Solaris are trademarks or registered trademarks of Sun Microsystems, Inc. in the U.S. and in other countries.

U.S. Government Rights—Commercial use. Government users are subject to the Sun Microsystems, Inc. standard license agreement and applicable provisions of the FAR and its supplements.

DOCUMENTATION IS PROVIDED "AS IS" AND ALL EXPRESS OR IMPLIED CONDITIONS, REPRESENTATIONS AND WARRANTIES, INCLUDING ANY IMPLIED WARRANTY OF MERCHANTABILITY, FITNESS FOR A PARTICULAR PURPOSE OR NON-INFRINGEMENT, ARE DISCLAIMED, EXCEPT TO THE EXTENT THAT SUCH DISCLAIMERS ARE HELD TO BE LEGALLY INVALID.

Copyright © 2004 Dot Hill Systems Corporation, 6305 El Camino Real, Carlsbad, Californie 92009, Etats-Unis. Tous droits réservés.

Sun Microsystems, Inc. et Dot Hill Systems Corporation peuvent avoir les droits de propriété intellectuels relatants à la technologie incorporée dans le produit qui est décrit dans ce document. En particulier, et sans la limitation, ces droits de propriété intellectuels peuvent inclure un ou plus des brevets américains énumérés à <http://www.sun.com/patents> et un ou les brevets plus supplémentaires ou les applications de brevet en attente dans les Etats-Unis et dans les autres pays.

Ce produit ou document est protégé par un copyright et distribué avec des licences qui en restreignent l'utilisation, la copie, la distribution, et la décompilation. Aucune partie de ce produit ou document ne peut être reproduite sous aucune forme, par quelque moyen que ce soit, sans l'autorisation préalable et écrite de Sun et de ses bailleurs de licence, s'il y ena.

Le logiciel détenu par des tiers, et qui comprend la technologie relative aux polices de caractères, est protégé par un copyright et licencié par des fournisseurs de Sun.

Des parties de ce produit pourront être dérivées des systèmes Berkeley BSD licenciés par l'Université de Californie. UNIX est une marque déposée aux Etats-Unis et dans d'autres pays et licenciée exclusivement par X/Open Company, Ltd.

Sun, Sun Microsystems, le logo Sun, Sun StorEdge, AnswerBook2, docs.sun.com, et Solaris sont des marques de fabrique ou des marques déposées de Sun Microsystems, Inc. aux Etats-Unis et dans d'autres pays.

LA DOCUMENTATION EST FOURNIE "EN L'ÉTAT" ET TOUTES AUTRES CONDITIONS, DECLARATIONS ET GARANTIES EXPRESSES OU TACITES SONT FORMELLEMENT EXCLUES, DANS LA MESURE AUTORISEE PAR LA LOI APPLICABLE, Y COMPRIS NOTAMMENT TOUTE GARANTIE IMPLICITE RELATIVE A LA QUALITE MARCHANDE, A L'APTITUDE A UNE UTILISATION PARTICULIERE OU A L'ABSENCE DE CONTREFAÇON.



Adobe PostScript

Contents

New Features in This Release	1
Release Documentation	2
Supported Operating Systems and Software	3
Supported Connection Methods and Host Adapters	4
Supported Sun Platforms and Connection Methods	5
Supported Cabinets	7
Supported Disk Drives	8
Supported Cables	9
Bootability	9
Required Solaris Patches	10
▼ To Download and Install the Solaris Recommended Patch Cluster	10
Using the Sun StorEdge 3000 Family Software	11
▼ To Download and Install the Software	11
Downloading Disk Drive Firmware	12
Documentation Clarifications	12
Known Issues	14
Fixed Software Bugs	17

Sun StorEdge 3120 SCSI Array Release Notes

Read these release notes before attempting to install or use the Sun StorEdge™ 3120 SCSI array. This document provides important, late-breaking news and other required information to use your array successfully.

New Features in This Release

The following features and products are now available in this release:

- The 1.6.2 software fixes bugs and can be used with all Sun StorEdge 3000 family arrays. For a listing of fixed bugs, refer to [“Fixed Software Bugs” on page 17](#). Refer to the *3000 Family 1.6 User’s Guide* for detailed information about commands and options.
- Firmware patch 113728-01 containing firmware version 1167 is now available on SunSolve, and can be downloaded with the CLI.
- Updated translated manuals are now available on all 3000 Family product web sites. Updated translated software is available on the Sun Download Center.

Release Documentation

These release notes supplement the documents shown in the following table.

TABLE 1 Sun StorEdge 3120 SCSI Array Documentation

Title	Part Number
<i>Sun StorEdge 3000 Family Installation, Operation, and Service Manual</i>	816-7956
<i>Sun StorEdge 3000 Family Rack Installation Guide for 1U Arrays</i>	816-7964
<i>Sun StorEdge 3000 Family FRU Installation Guide</i>	816-7326
<i>Sun StorEdge 3000 Family Software Installation Manual</i>	817-3764
<i>Sun StorEdge 3000 Family Configuration Service 1.5 User's Guide</i>	817-3337
<i>Sun StorEdge 3000 Family Diagnostic Reporter 1.5 User's Guide</i>	817-3338
<i>Sun StorEdge 3000 Family CLI 1.6 User's Guide</i>	817-4951
<i>Sun StorEdge 3000 Family Safety, Regulatory, and Compliance Manual</i>	816-7930

You can download the documents listed in the preceding table from either of the following locations:

- http://www.sun.com/products-n-solutions/hardware/docs/Network_Storage_Solutions/Workgroup/3120
- <http://docs.sun.com/db/coll/3120SCSIarray>

Supported Operating Systems and Software

The supported operating systems are:

- Solaris 8 and 9 operating systems
- Solaris 9 operating system x86 Platform Edition (9 04/04)
- Microsoft Windows NT Server 4.0, Windows 2000 Advanced Server, and Windows 2003 Server operating systems
- Red Hat AS 2.1 and 3.0
- Novell Netware 5.1 and 6.5

The supported software includes:

- Sun StorEdge 3000 Family Configuration Service 1.5
- Sun StorEdge 3000 Family Diagnostic Reporter 1.5
- Sun StorEdge 3000 Family CLI 1.6.2
- Sun Cluster™ 3.0 and 3.1 software
- Solstice DiskSuite 4.2.1 or greater (for the Solaris 8 operating system)
- Solaris Volume Manager 4.2.1 (for the Solaris 9 operating system and above)
- Veritas Volume Manager 3.5 and 4.0
- Sun StorEdge Performance Suite (with Sun StorEdge QFS software)
- Sun StorEdge Utilization Suite (with Sun StorEdge SAM-FS software)
- The Sun Storage Automated Diagnostic Environment 2.3

This utility is currently being updated to support the Sun StorEdge 3120 SCSI array. When the update is completed, the SUNWstade 116720-07 patch will be required.

Supported Connection Methods and Host Adapters

The Sun StorEdge 3120 SCSI array can be connected to a host in one of the following ways:

- By means of a supported host adapter
- By means of a single-ended SCSI controller embedded in a supported host

Refer to [TABLE 2](#) for the list of supported host adapters and connections.

TABLE 2 Supported Host Adapters and Connections

Operating System	Host Adapter	Part Number
Solaris operating system	An on-board SCSI port attachment (on the host system)	N/A
Solaris operating system	Sun StorEdge PCI Dual Ultra3 SCSI host adapter	(X)6758A
Solaris operating system	Dual Ultra2 SCSI and dual FastEthernet PCI adapter	(X)2222A
Solaris operating system	Dual Ultra2 SCSI and dual Gigabit Ethernet PCI PCI adapter	(X)4422A
Solaris operating system	SunSwift adapter (Sun FastEthernet 10/100BaseT F/W UltraSCSI SBus adapter 1.0)	(X)1018A
Solaris x86 9 update 6 (Sun Fire V20z server only)	Ultra320 SCSI Dual Channel PCI-X adapter	X9265A LSI22320-R ¹
Red Hat AS 2.1 and 3.0 (Sun Fire V20z server only)	Ultra320 SCSI Dual Channel PCI-X adapter	X9265A LSI22320-R ¹
Windows 2000/2003/NT	Ultra320 SCSI Dual Channel PCI-X adapter	X9265A LSI22320-R ¹

¹ The LSI22320-R HBA is not available from Sun.



Caution – If you are using the Sun StorEdge PCI Dual Ultra3 SCSI host adapter (X)6758A, make sure to download and install the adapter’s driver in the host where the adapter is installed. (See the *Sun StorEdge PCI Dual Ultra3 SCSI Host Adapter Release Notes*, part number 816-2157 for the download procedure.) Without the driver, any array connected to the adapter is not visible to the host, since this driver is not included in the Solaris operating system.

Supported Sun Platforms and Connection Methods

TABLE 3 and TABLE 4 show the connection methods supported for each supported Sun system. A “No” in any of the columns indicates that the HBA or on-board SCSI port is not supported on the platform.

TABLE 3 Supported Sun SPARC-Based Systems and Connection Methods

	(X)6758A Host Adapter	On-Board SCSI Port	(X)2222A and (X)4422A HBAs	(X)1018A SBUS Adapter
Ultra™ 60 workstation	Yes	Yes	Yes	No
Ultra 80 workstation	Yes	Yes	Yes	No
Sun Blade™ 150 workstation	No	No	Yes	No
Sun Blade 1000 workstation	Yes	Yes	Yes	No
Sun Blade 1500 workstation	Yes	No	Yes	No
Sun Blade 2000 workstation	Yes	Yes	Yes	No
Sun Blade 2500 workstation	Yes	Yes	Yes	No
Netra™ 20 server	Yes	Yes	Yes	No
Netra 120 server	Yes	Yes	Yes	No
Netra 1280 server	Yes	Yes	Yes	No
Netra t 1120 server	Yes	Yes	Yes	No
Netra t 1125 server	Yes	Yes	Yes	No
Netra t 1400 server	Yes	Yes	Yes	No
Netra t 1405 server	Yes	Yes	Yes	No
Sun Enterprise™ 220R server	Yes	Yes	Yes	No
Sun Enterprise 250 server	Yes	Yes	Yes	No
Sun Enterprise 420R server	Yes	Yes	Yes	No
Sun Enterprise 450 server	Yes	Yes	Yes	No
Sun Enterprise 3500 server	No	Yes	No	Yes
Sun Enterprise 4500 server	No	Yes	No	Yes
Sun Enterprise 5500 server	No	Yes	No	Yes
Sun Enterprise 6500 server	No	Yes	No	Yes

TABLE 3 Supported Sun SPARC-Based Systems and Connection Methods *(Continued)*

	(X)6758A Host Adapter	On-Board SCSI Port	(X)2222A and (X)4422A HBAs	(X)1018A SBus Adapter
Sun Enterprise 10000 server	No	Yes	No	Yes
Sun Fire™ 280R server	Yes	Yes	Yes	No
Sun Fire V120 server	Yes	Yes	Yes	No
Sun Fire V210 server	Yes	Yes	Yes	No
Sun Fire V240 server	Yes	Yes	Yes	No
Sun Fire V250 server	Yes	Yes	Yes	No
Sun Fire V440 server	Yes	Yes	Yes	No
Sun Fire V480 server	Yes	N/A	Yes	No
Sun Fire V880 server	Yes	N/A	Yes	No
Sun Fire V1280 server	Yes	Yes	Yes	No
Sun Fire 2900 server	Yes	Yes	Yes	No
Sun Fire 4800 server	Yes	N/A	Yes	No
Sun Fire 4810 server	Yes	N/A	Yes	No
Sun Fire 4900 server	Yes	No	Yes	No
Sun Fire 6800 server	Yes	N/A	Yes	No
Sun Fire 6900 server	Yes	No	Yes	No
Sun Fire 12K server ¹	Yes	No	Yes	No
Sun Fire 15K server ²	Yes	No	Yes	No
Sun Fire E20K server	Yes	No	Yes	No
Sun Fire E25K server	Yes	No	Yes	No

1 The Sun Fire 12K server is currently not supported with the (X)4422A HBA.

2 The Sun Fire 15K server is currently not supported with the (X)4422A HBA.

TABLE 4 Supported Sun x86-Based Systems and Connection Methods

	On-board ¹	X9265A LSI22320-R ²
Sun Fire V60x server	No	No
Sun Fire V65x server	No	No
Sun Fire V20z server	No	Yes

1 At this time, on-board HBAs with the Sun Fire V60x and V65x servers are not supported due to incompatibility with the SCSI chip and LSI repeater in the Sun StorEdge 3120 SCSI array.

2 The X9265A/LSI22320-R HBA has not been fully qualified with Sun StorEdge 3120 SCSI arrays attached to the Sun Fire V60x and V65x servers as of this publication date.

Supported Cabinets

The following table shows the supported cabinets with their associated rackmount kits and other required kits. See the *Sun StorEdge 3000 Family Rack Installation Guide for 1U Arrays* for installation instructions.

TABLE 5 Supported Cabinets and Associated Rackmount Kits

Cabinet Name	Cabinet Part Number(s)	Required Kit(s)	Required Kit Part Number	Maximum Number of Arrays Supported per Cabinet
Sun StorEdge 72-inch Expansion Cabinet	SG-(X)ARY030A	Rackmount Kit	(X)TA-3000-1URK-19U	16
Sun Fire Cabinet	SF-(X)CAB, SFE-(X)CAB	Rackmount Kit	(X)TA-3000-1URK-19U	10
Sun Rack 900 Cabinet	SR9-(X)KM038A-IP	Rackmount Kit	(X)TA-3000-1URK-19U	24
Sun Fire 6800 System	F6800-1	Rackmount Kit	(X)TA-3000-1URK-19U	7
Sun Fire E6900 System	E6900-BASE	Rackmount Kit	(X)TA-3000-1URK-19U	5
Standard EIA Cabinets	Not Applicable	Rackmount Kit	(X)TA-3000-1URK-19U	Varies
Telco flushmount racks	Not Applicable	Rackmount Kit	(X)TA-3110-RK-19F	Varies
Telco center-of-gravity racks	Not Applicable	Rackmount Kit	(X)TA-3110-RK-19C	Varies

Note – For more information about using Sun StorEdge arrays with the Sun Rack 900 cabinet, refer to the Sun Rack 900 Qualified Products web page at <http://www.sun.com/servers/rack/approved.html>.

Supported Disk Drives

The following table gives descriptions and part numbers for the disk drives supported with the Sun StorEdge 3120 SCSI array.

TABLE 6 Supported Disk Drives

Description	Part Number	FRU ID Number
73 GB 10,000 RPM	XTA-SC1NC-73G10K	F540-6056
36 GB 15,000 RPM	XTA-SC1NC-36G15K	F540-6055
73 GB 15,000 RPM	XTA-SC1NC-73G15K	F540-6057
146 GB 10,000 RPM	XTA-SC1NC-146G10K	F540-6058

Note – In an array shipped with less than 4 drives, each empty slot in the array contains an air management sled to correctly handle the air flow and heat. Each drive slot requires either a disk drive or an air management sled.

Note – Disk drive firmware is provided through Sun disk firmware patches, which include the required download utility. Sun disk firmware patches are separate from the Sun StorEdge 3000 family firmware patches. Do not use the Sun StorEdge Configuration Service or CLI utility to download disk drive firmware.

Supported Cables

The following table lists the supported SCSI cables. Cables may be ordered using the marketing part numbers in the following table.

Note – The manufacturing part numbers supplied in the third column of the table can be checked against the manufacturing part numbers stamped on other cables that you might have in stock to confirm that they are supported.

TABLE 7 Supported Cables

Cable Type and Length	Marketing Part Number	Manufacturing Part Number
VHDCI/VHDCI 0.8 m	(X)1136A	595-5645-01
VHDCI/VHDCI 1.2 m	(X)1137A	595-5647-01
VHDCI/VHDCI 2 m	(X)1138A	595-5646-01
VHDCI/VHDCI 4 m	(X)3830B	595-6349-01
VHDCI/VHDCI 10 m	(X)3831B	595-6350-01
HD-68/VHDCI, 0.8 m	(X)1132A	595-5660-01
HD-68/VHDCI, 1.2 m	(X)1135A	595-7460-01
HD-68/VHDCI, 2 m	(X)3832A	595-4693-01
HD-68/VHDCI, 4 m	(X)3830A	595-4694-01
HD-68/VHDCI, 10 m	(X)3831A	595-4695-01

Note – When you attach the provided SCSI bus cables to the Sun StorEdge 3120 SCSI array, it is important to tighten the cable jack screws with six full clockwise turns prior to powering up the array, to ensure proper operation.

Bootability

To boot a host through a Sun StorEdge PCI Dual Ultra3 SCSI host bus adapter, follow the procedures in the “Enabling a Host to Boot Through the Host Adapter” chapter in the *Sun StorEdge PCI Dual Ultra3 SCSI Host Adapter Installation Guide*, part number 816-2156.

An online copy of the installation guide is available from the web site:

http://www.sun.com/products-n-solutions/hardware/docs/Network_Storage_Solutions/Adapters/index.html

For a current list of patches for this host bus adapter, including driver patches, refer to:

<http://www.sun.com/sunsolve/>

Search for "Sun StorEdge PCI Dual Ultra3 SCSI Host Adapter" in the "Search SunSolve" search area.

Required Solaris Patches

The Solaris 8 or Solaris 9 Recommended Patch Cluster is required to use Sun StorEdge Configuration Service and Diagnostic Reporter software. Make sure the Solaris Recommended Patch Cluster is installed on a Solaris host before connecting the host to the array.

▼ To Download and Install the Solaris Recommended Patch Cluster

1. Log in to the host that you want to connect to the array.
2. Go to <http://www.sun.com/sunsolve>.
3. Under "SunSolve Patch Contents," click "Patch Portal."
4. Under "Downloads," click "Recommended & Security Patches."
5. Read the SOFTWARE LICENSE AGREEMENT and click the Agree button.
6. In the "Recommended & Security Solaris Patch Clusters for Solaris" table, find either "Solaris 8" or "Solaris 9" in the OS column, and click "View Readme."
7. Print or save the Readme file from the browser window.
8. Click the browser's "Back" icon to return to the previous page.
9. Select the format you want in the row that begins "Solaris 8" or "Solaris 9" in the "Recommended & Security Solaris Patch Clusters" table, either "HTTP" or "FTP" next to "Download Cluster."

10. In the Save As dialog box, type a destination directory for the patch cluster, and then click OK.
11. Follow the procedure in the “INSTALLATION INSTRUCTIONS” section in the Readme file to install the patches.

Using the Sun StorEdge 3000 Family Software

Sun StorEdge Configuration Service software supports Sun StorEdge 3120 SCSI JBOD arrays. For an overview of the features available for JBODs, refer to the *Sun StorEdge 3000 Family Installation, Operation and Service Manual* for the array. For detailed coverage, refer to the *Sun StorEdge 3000 Family Configuration Service User's Guide*.

▼ To Download and Install the Software

To download Sun StorEdge Configuration Service, Sun StorEdge Diagnostic Reporter, or Sun StorEdge CLI from the Sun web site if your Sun StorEdge 3000 Family Professional Manager CD is not available, perform the following steps.

1. Go to:

<http://www.sun.com/software/download/>

2. Under **System Administration > Storage Management**, click the **Sun StorEdge 3000 Family Storage Products - Related Software** link, and click the **Download** button.

You are taken to a Sun Download Center page.

3. If not previously registered, register.

- a. Click the **Register Now** link at the bottom of the left column.

- b. On the registration page, enter applicable data in the required fields and click **Register**.

4. Log in.

- a. Type your **Username** and **Password** in the left column, and click **Login**.

- b. On the **Terms of Use** page, read the license agreement, click **Yes** next to **Accept**, and click the **Continue** button.

5. On the software download page, click the link for your array and operating system.
6. In the dialog box that is displayed, specify a destination directory and save the file.
7. Follow the software installation instructions in the *Sun StorEdge 3000 Family Software Installation Guide*.

Downloading Disk Drive Firmware

To download disk drive firmware, use the appropriate Sun disk drive firmware patch and instructions. Do not use the CLI or Sun StorEdge Configuration Service to download disk drive firmware.

Note – Disk drive firmware is provided through Sun disk firmware patches, which include the required download utility. Sun disk firmware patches are separate from the Sun StorEdge 3000 family firmware patches.

Documentation Clarifications

In the *Sun StorEdge 3000 Family Installation, Operation, and Safety Manual*, section 5.2.1, *Enabling JBOD Support*, dual-bus configurations in the Sun StorEdge Configuration Service main window needs further clarification.

You can configure a dual-bus, dual-server configuration as shown in [FIGURE 1](#). In the dual-server configuration, a SAF-TE limitation prevents the main window from showing the drives connected to port A and port B. The program can only monitor the JBOD from the server connected to port B as shown in [FIGURE 1](#).

Or, you can configure a dual-bus, single-server configuration that uses two HBAs on a single server as shown in [FIGURE 2](#). In the single-server configuration, Sun StorEdge Configuration Service compensates for the SAF-TE limitation and displays all the drives connected to port A and port B.

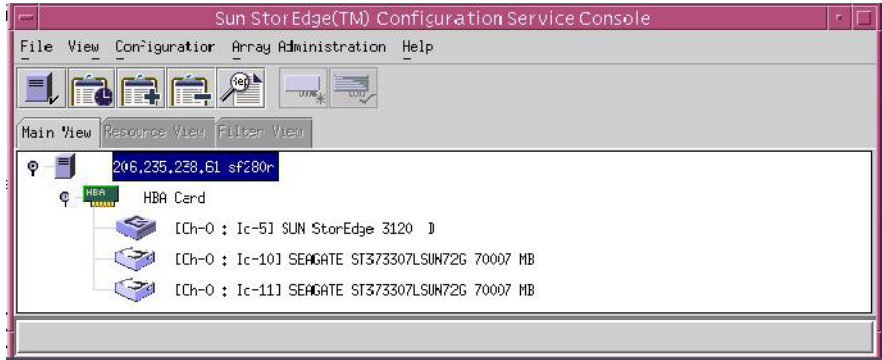


FIGURE 1 Dual-Bus, Dual-Server Configuration

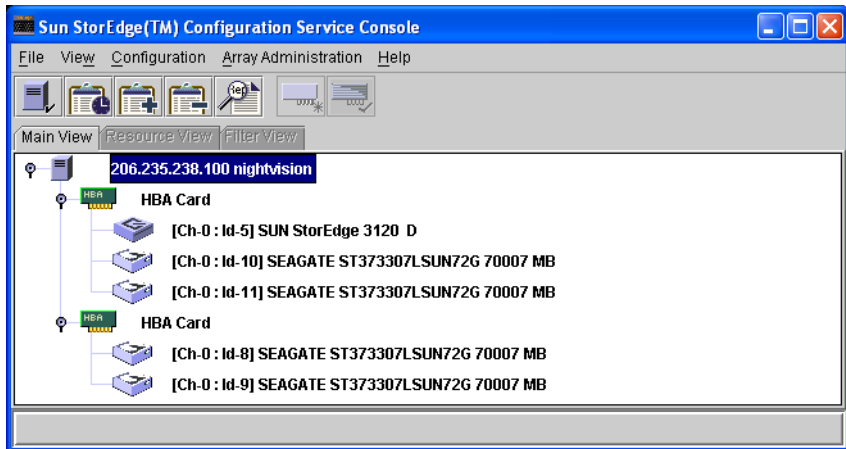


FIGURE 2 Dual-Bus, Single-Server, Dual HBA Configuration

Known Issues

The following bug listing is in numeric order.

- **Bug 4989784: addr IDs are not showing correctly on dual-bus config using sccli.** Downloading the SAF-TE results in incorrect address IDs displaying in the Sun StorEdge CLI. Using the `show led-status` command in a dual-bus configuration, displays incorrect address IDs.
- **Bug 4990478: SCS shows 2 SAF- TE's even after removing the SES devices and running devfsadm.** Sun StorEdge Configuration Service shows 2 SAF-TE devices after removing the SES devices and running `devfsadm`. After downloading the SAF-TE 1.5, address IDs are not showing correctly in Sun StorEdge Configuration Service. The probe operation changed the SES device ID. The SCS agent is not able to remove the duplicate SES in this case. To remove the duplicate SES icon from the SCS console, `stop` and then restart the SCS agent.
- **Bug 4994880: SCS 1.5 reports last reading temp. sensor from removed P.S. fru; not as missing.** There is an inconsistency between the status values for temperature readings on the Sun StorEdge Configuration Service View Enclosure dialog box and the results returned from the Sun StorEdge CLI `show enclosure-status` command when the Power Supply/FAN FRU is physically removed. When a Power Supply 0 FRU is physically pulled from the Sun StorEdge 3120 array enclosure, the status for Power Supply 0 and Fan 0 correctly change to Absent using the CLI `show enclosure-status` command. Temperature Sensor 2 changes to the correct status also. However, in the Sun StorEdge Configuration Service View Enclosure dialog box, Power Supply 0 and Fan 0 show as degraded, but Temperature 2 remains with the last seen temperature value. The removed Power Supply 0 and Fan 0 are logged in the Event Log, but the missing temperature sensor is not.
- **Bug 4997452: sccli help does not list all the commands.** In some places the CLI online help uses the short form of the command syntax, rather than the long form. The short form and the long form both work with the CLI. For instance, `show led` or `show led-status` both execute the command and `show battery` or `show battery-status` both execute the command. Refer to the *Sun StorEdge 3000 Family CLI User's Guide* for a complete list of commands and their descriptions.
- **Bug 5001923: Downloading SAFTE fw on the 1U with CLI 1.5 on windows os fails.** On Microsoft Windows operating systems, use Sun StorEdge Configuration Service to download SAF-TE firmware rather than Sun StorEdge CLI. Using the CLI results in an unsuccessful download.

- Bug 5007342: sscs console does not show both paths on a dual-bus configuration.** This issue only affects the Sun StorEdge 3120 SCSI and 3310 SCSI JBOD array, and is related to the design. The SCSI JBOD has one SAF-TE chip however, the JBOD can be configured as a split-bus (also known as dual-bus) as shown in the following figure.

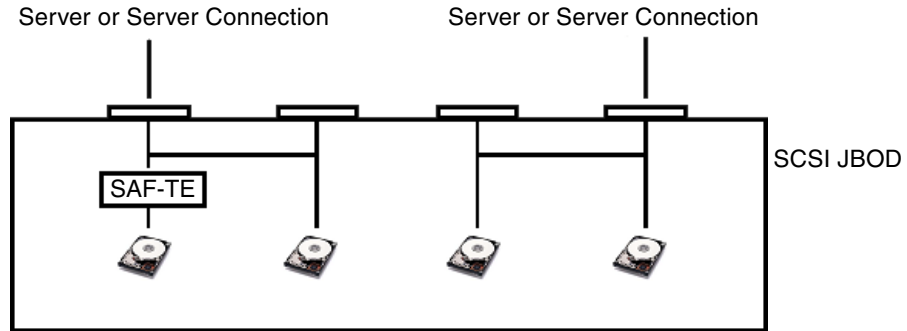


FIGURE 3 Dual-bus (Split-bus) Configuration Example

The Sun StorEdge Configuration Service (SSCS) software is programmed to detect and recognize the inquiry string on the SAF-TE chip and to show the devices on the same bus as the SAF-TE in the main window.

In a split-bus configuration, the SAF-TE chip is only on one bus. SSCS should show the SAF-TE chip as well as the two drives on each bus; however, it does not show the two drives on the bus without the SAF-TE if the drives have a different model number or manufacturer than the drives that are attached to the SAF-TE bus. If the model number or manufacturer differs between the two buses, only the drives attached to the SAF-TE display in the main window.

Also, SSCS by design does not show redundant paths to the drives. Therefore, if you have two HBAs connected to two JBOD ports on the same bus (single bus or split-bus), only one HBA will be reported as connected to those drives; the second HBA will not be displayed.

- Bug 5013868 SSCS does not report critical event via e-mail when severity is set at critical.** No email notification is sent when a power supply is removed. In Sun StorEdge Configuration Service (SSCS), in the Add Server window, on the Mailing Lists tab, if the Severity is set to Critical, after a power supply is removed, an e-mail should be sent. However, no email notification is sent. This might be a problem if a customer relies only on email for critical information. The View Enclosure window shows the power supply status as Critical.
Workaround: Use the View Enclosure window to monitor power supply status.
- Bug 5016154: SCCLI: OOB connection failed with "network connection setup failed".** While trying to communicate to diag67 (3310 SCSI) 00b via StorADE, I could not gain access to the unit. In-band works fine. The problem with StorADE is that the sccli can not communicate with the Sun StorEdge array.

- **Bug 5031314: On 3120D (JBOD1U) view enclosure can't display "Package/PLD Rev".** On 3120D (JBOD1U). View enclosure can't display "package/PLD Rev". This is a product feature that is useful.
- **Bug 5038119: Incorrect rack mounting instruction for SunRack900 in 816-7964-12 Rack Installation Guide.** In Table-1 for rack mount instruction in 816-7964-12 Rack Installation Guide, the instruction for Sun Rack 900 is incorrect because Sun Rack 900 does not have a middle bracket.

72-inch Expansion Cabinet: Rear Bracket

Sun Fire Cabinet: Middle Bracket

Sun Rack 900: Middle Bracket (This should be Rear Bracket)

- **Bug 5040730: Description: SE3110 is still referred to in the Service Manual.** The name of SE3110 still exists on page 5-13 of the service manual, 816-7956-10 March 2004, Revision A.
- **Bug 5044120: 3310/3120 JBOD - Not displaying disk information.** The show config command does not present any information about the disks. The show disks command outputs that the operation is not supported for JBODs.
- **Bug 5046904: A note of the 'password may be required' is needed.** To avoid confusion, a note like "password may be required" (if not already logged in as ssconfig or ssadmin) needs to be added after step 1 'Choose View -> Agent Options Management as described on page 5-2 of 816-7956-10 and page 189 of 817-3337-12.
- **Bug 5048559: 'Speaker Test' feature needs to be documented.** Speaker Test feature needs to be clearly defined in the document, 817-3337-12, because there is no clear instruction about how to use the feature and the purpose of it.
- **Bug 5062511: VM mirrored volume hang with V440 on board SCSI.** From the system core, vxconfigd is stuck in kernel waiting for I/Os to complete. Unless these I/Os complete, vxconfigd cannot process any vxvm commands. So the commands would appear to be hanging.

Fixed Software Bugs

The following table contains the bugs that were fixed in Sun StorEdge CLI 1.6.2.

TABLE 8 Fixed CLI Bugs

Bug ID	Synopsis
4922658	"sccli --list" on a host with IDE cd-rom and "vold" disabled causes uata timeout
4986132	show disk output needs a space
5040866	'sccli> help exit' complaints 'sccli: no matching commands found'
5042129	sccli> show or set led does not work for sdxx or cxtxdx
5042531	minnow: show safte-devices does not show safte status
5052701	1.5 sccli reports 'not supported' message for older revision batteries
5069625	Cache optimization mode can be incorrectly changed causing data integrity issue.
5092121	sccli allows failed controller operation before a failback has completed on a prev

