

Sun™ Management Center- Tivoli TEC Adapter Installation Guide



THE NETWORK IS THE COMPUTER™

Sun Microsystems, Inc.
901 San Antonio Road
Palo Alto, CA 94303-4900 USA
650 960-1300 Fax 650 969-9131

Part No. 806-2071-10
November 1999, Revision A

Send comments about this document to: docfeedback@sun.com

Copyright 1999 Sun Microsystems, Inc., 901 San Antonio Road • Palo Alto, CA 94303 USA. All rights reserved.

This product or document is protected by copyright and distributed under licenses restricting its use, copying, distribution, and decompilation. No part of this product or document may be reproduced in any form by any means without prior written authorization of Sun and its licensors, if any. Third-party software, including font technology, is copyrighted and licensed from Sun suppliers.

Parts of the product may be derived from Berkeley BSD systems, licensed from the University of California. UNIX is a registered trademark in the U.S. and other countries, exclusively licensed through X/Open Company, Ltd. For Netscape Communicator™, the following notice applies: Copyright 1995 Netscape Communications Corporation. All rights reserved.

Sun, Sun Microsystems, the Sun logo, AnswerBook, Java, the Java Coffee Cup logo, and Solaris are trademarks, registered trademarks, or service marks of Sun Microsystems, Inc. in the U.S. and other countries. All SPARC trademarks are used under license and are trademarks or registered trademarks of SPARC International, Inc. in the U.S. and other countries. Products bearing SPARC trademarks are based upon an architecture developed by Sun Microsystems, Inc.

The OPEN LOOK and Sun™ Graphical User Interface was developed by Sun Microsystems, Inc. for its users and licensees. Sun acknowledges the pioneering efforts of Xerox in researching and developing the concept of visual or graphical user interfaces for the computer industry. Sun holds a non-exclusive license from Xerox to the Xerox Graphical User Interface, which license also covers Sun's licensees who implement OPEN LOOK GUIs and otherwise comply with Sun's written license agreements.

RESTRICTED RIGHTS: Use, duplication, or disclosure by the U.S. Government is subject to restrictions of FAR 52.227-14(g)(2)(6/87) and FAR 52.227-19(6/87), or DFAR 252.227-7015(b)(6/95) and DFAR 227.7202-3(a).

DOCUMENTATION IS PROVIDED "AS IS" AND ALL EXPRESS OR IMPLIED CONDITIONS, REPRESENTATIONS AND WARRANTIES, INCLUDING ANY IMPLIED WARRANTY OF MERCHANTABILITY, FITNESS FOR A PARTICULAR PURPOSE OR NON-INFRINGEMENT, ARE DISCLAIMED, EXCEPT TO THE EXTENT THAT SUCH DISCLAIMERS ARE HELD TO BE LEGALLY INVALID.

Copyright 1999 Sun Microsystems, Inc., 901 San Antonio Road • Palo Alto, CA 94303 Etats-Unis. Tous droits réservés.

Ce produit ou document est protégé par un copyright et distribué avec des licences qui en restreignent l'utilisation, la copie, la distribution, et la décompilation. Aucune partie de ce produit ou document ne peut être reproduite sous aucune forme, par quelque moyen que ce soit, sans l'autorisation préalable et écrite de Sun et de ses bailleurs de licence, s'il y en a. Le logiciel détenu par des tiers, et qui comprend la technologie relative aux polices de caractères, est protégé par un copyright et licencié par des fournisseurs de Sun.

Des parties de ce produit pourront être dérivées des systèmes Berkeley BSD licenciés par l'Université de Californie. UNIX est une marque déposée aux Etats-Unis et dans d'autres pays et licenciée exclusivement par X/Open Company, Ltd. La notice suivante est applicable à Netscape Communicator™ : Copyright 1995 Netscape Communications Corporation. All rights reserved.

Sun, Sun Microsystems, le logo Sun, AnswerBook, Java, le logo Java Coffee Cup, et Solaris sont des marques de fabrique ou des marques déposées, ou marques de service, de Sun Microsystems, Inc. aux Etats-Unis et dans d'autres pays. Toutes les marques SPARC sont utilisées sous licence et sont des marques de fabrique ou des marques déposées de SPARC International, Inc. aux Etats-Unis et dans d'autres pays. Les produits portant les marques SPARC sont basés sur une architecture développée par Sun Microsystems, Inc.

L'interface d'utilisation graphique OPEN LOOK et Sun™ a été développée par Sun Microsystems, Inc. pour ses utilisateurs et licenciés. Sun reconnaît les efforts de pionniers de Xerox pour la recherche et le développement du concept des interfaces d'utilisation visuelle ou graphique pour l'industrie de l'informatique. Sun détient une licence non exclusive de Xerox sur l'interface d'utilisation graphique Xerox, cette licence couvrant également les licenciés de Sun qui mettent en place l'interface d'utilisation graphique OPEN LOOK et qui en outre se conforment aux licences écrites de Sun.

CETTE PUBLICATION EST FOURNIE "EN L'ETAT" ET AUCUNE GARANTIE, EXPRESSE OU IMPLICITE, N'EST ACCORDEE, Y COMPRIS DES GARANTIES CONCERNANT LA VALEUR MARCHANDE, L'APTITUDE DE LA PUBLICATION A REPENDRE A UNE UTILISATION PARTICULIERE, OU LE FAIT QU'ELLE NE SOIT PAS CONTREFAISANTE DE PRODUIT DE TIERS. CE DENI DE GARANTIE NE S'APPLIQUERAIT PAS, DANS LA MESURE OU IL SERAIT TENU JURIDIQUEMENT NUL ET NON AVENU.



Contents

1. Installation	11
Adapter Package Overview	11
Tivoli Files	11
Java Support Files	11
Documentation	12
Other Tivoli-related Installation Script Actions	12
Pre-Installation Tasks	12
Pre-Installation Checklist	12
Limitations of the Adapter	13
▼ Preliminary Preparations	13
Installation Parameters Checklist	18
Installation	19
▼ Installing the Adapter Package	19
Uninstalling	20
▼ Uninstalling the Adapter	20
▼ Deleting the Sun Management Center Task Library	20
Troubleshooting the Installation	20
Additional Help	21

2. Using the Applications 23

Starting the Applications 23

Starting the TEC Adapter and SyMONInt Application Together 23

▼ Starting the TEC Adapter and SyMONInt Application Together 24

Starting the TEC Adapter and SyMONInt Application separately 24

▼ Starting the TEC Adapter 24

▼ Starting the SyMONInt Application 25

SyMONInt Startup Parameters 26

Stopping the Applications 28

▼ Stopping the TEC Adapter and SyMONInt Applications 28

Application Tasks 28

▼ Viewing the Sun Management Center-Generated Events 28

▼ Starting the Hostdetail Task 32

Troubleshooting the Applications 35

TEC Adapter can't successfully startup 35

SyMONInt can't successfully startup 35

Sun Management Center alarms can't transfer to Tivoli 35

Can't run Sun Management Center Task Library 36

Can't launch Hostdetail window 41

Figures

FIGURE 1-1	Select Administrators Icon	14
FIGURE 1-2	Select Create Menu	15
FIGURE 1-3	Create Administrator	16
FIGURE 1-4	Set TMR Roles	16
FIGURE 1-5	Set Login Names	17
FIGURE 2-1	Sun Management Center-Tivoli Integration	25
FIGURE 2-2	Start Administrator's Event Console	29
FIGURE 2-3	Select SunMC Group	30
FIGURE 2-4	SunMC-Generated Events	31
FIGURE 2-5	Launch SunMC HostDetails	32
FIGURE 2-6	Sun Management Center Login Window	33
FIGURE 2-7	Host Details Window	34
FIGURE 2-8	Select Policy Region	37
FIGURE 2-9	Select SunMC Task Library	38
FIGURE 2-10	Get HostDetails Icon	39
FIGURE 2-11	Edit Task	40

Preface

This document describes how to install and configure the Sun Management Center integration package for Tivoli systems. This manual assumes that the installation and configuration will be performed by an experienced Tivoli administrator familiar with the Sun Management Center product.

Tivoli TME provides good general network monitoring functionality, and the Sun Management Center product provides excellent advanced capabilities and in-depth information for monitoring Sun products. The integration of these two applications provides Tivoli administrators with significant additional functionality to manage networks containing Sun products. This product performs two functions: First, it passes alarms from the Sun Management Center software to TEC (after appropriate filtering and formatting); and second, it provides access to the Sun Management Center Host Detail task library, thereby enabling Tivoli administrators to display the Sun Management Center Host Details screen for the hostname selected in the Tivoli event console.

Before You Read This Book

This manual assumes that the Tivoli environment has been correctly configured and that the installation of the Sun Management Center adapter package will be performed by an experienced Tivoli administrator. In particular, the Tivoli Logfile Adapter software must be installed so that the appropriate adapter directories and infrastructure exist. Refer to the Tivoli *TME10 Enterprise Console Adapters Guide* for Tivoli-specific procedures.

This manual also assumes that the Sun Management Center Console, all Sun Management Center-related `.jar` files, and the Sun Management Center-included Java Runtime Environment (JRE) have been installed on the Tivoli server on which the Sun Management Center adapter package will run. Refer to the *Sun Management Center 2.1 Software User's Guide* for instructions on installing this software.

Using UNIX Commands

This document may not contain information about basic UNIX[®] commands or procedures for shutting down the system, booting the system, or configuring devices.

Refer to one or more of the following for this information:

- *Solaris Handbook for Sun Peripherals*
- AnswerBook2[™] online documentation for the Solaris[™] operating environment
- Other software documentation that you received with your system

Typographic Conventions

TABLE P-1 Typographic Conventions

Typeface	Meaning	Examples
AaBbCc123	The names of commands, files, and directories; on-screen computer output	Edit your <code>.login</code> file. Use <code>ls -a</code> to list all files. % You have mail.
AaBbCc123	What you type, when contrasted with on-screen computer output	% su Password:
<i>AaBbCc123</i>	Book titles, new words or terms, words to be emphasized	Read Chapter 6 in the <i>User's Guide</i> . These are called <i>class</i> options. You <i>must</i> be superuser to do this.
	Command-line variable; replace with a real name or value	To delete a file, type <code>rm filename</code> .

Shell Prompts

TABLE P-2 Shell Prompts

Shell	Prompt
C shell	<i>machine_name%</i>
C shell superuser	<i>machine_name#</i>
Bourne shell and Korn shell	\$
Bourne shell and Korn shell superuser	#

Related Documentation

TABLE P-3 Related Documentation

Application	Title	Part Number
Sun Management Center Installation	<i>Sun Management Center 2.1 Software User's Guide</i>	806-3166-10
Tivoli adapters	<i>TME10 Event Integration Facility User's Guide</i>	
Tivoli task libraries and tasks	<i>TME10 Framework User's Guide</i>	
Tivoli BAROC file and rules	<i>TME10 Enterprise Console Rule Builder's Guide</i>	
Tivoli Console and tasks	<i>TME10 Enterprise Console User's Guide</i>	

Ordering Sun Documentation

Fatbrain.com, an Internet professional bookstore, stocks select product documentation from Sun Microsystems, Inc.

For a list of documents and how to order them, visit the Sun Documentation Center on Fatbrain.com at:

<http://www.fatbrain.com/documentation/sun>

Sun Documentation on the Web

The docs.sun.comsm web site enables you to access Sun technical documentation on the Web. You can browse the docs.sun.com archive or search for a specific book title or subject at:

<http://docs.sun.com>

Sun Welcomes Your Comments

We are interested in improving our documentation and welcome your comments and suggestions. You can email your comments to us at:

docfeedback@sun.com

Please include the part number (806-2071-10) of your document in the subject line of your email.

Installation

Adapter Package Overview

The name of the adapter package is: `SUNWestia`.

Tivoli Files

The `rootdir` for the Tivoli files is `$BINDIR/TME/TEC/adapters` (`$BINDIR` is defined in `/etc/Tivoli/setup_env.sh`).

- `tecad_symon.baroc`, `tecad_symon_conf`, and `tecad_symon.err` are located in `rootdir/etc`. These files are the typical necessary Tivoli adapter event class definition, configuration, and error files.
- `tecad_symon` and `SMCTaskLib` are located in `rootdir/bin`. `tecad_symon` is the actual adapter file that needs to be run. `SMCTaskLib` is the task library containing the Sun Management Center `HostDetails` launch task for the Tivoli Console.

Java Support Files

- `/opt/SUNWsymon/SunMC-Tivoli/classes` — contains `.jar` files.
- `/opt/SUNWsymon/SunMC-Tivoli/sbin` — contains the following Bourne shell scripts:
 - `LaunchHDBean.sh` — called from `SMCTaskLib` to pass required Sun Management Center event parameters to `LaunchHDBean.class`.
 - `SunMC_Tivoli` — Bourne shell scripts to *start* and *stop* the adapters.

- `si-start.sh` — Bourne shell script that sets the appropriate environment variables and starts the SyMONInt application.

Documentation

- PostScript and PDF versions of this document are located in `/opt/SUNWsymon/SunMC-Tivoli/doc` .

Other Tivoli-related Installation Script Actions

- The installation script adds the event server's name to the `tecad_symon.conf` file.
- The script creates a Tivoli source group for Sun Management Center software.
- The script compiles and adds the Sun Management Center Task Library.
- The script creates, compiles, and loads a Sun Management Center rule base, then provides you with the option of restarting the event server (restarting the event server is required for the new rule base to be recognized).

Pre-Installation Tasks

Pre-Installation Checklist

You install the Sun Management Center Tivoli Integration Package by running the installation script `install.sh`. Before running the script, check that the following conditions are met:

- TME Frame Work is installed.
- TEC server is installed.
- TEC Console is installed.
- At least Sun Management Center's console is installed.
- Ensure that the C preprocessor `cpp` is installed in `/usr/ccs/lib`.
- In Tivoli, that an administrator has been created with the TME Roles `admin`, `senior`, and `super`.

- The Sun Management Center Console, and the Sun Management Center-included Java Runtime Environment (JRE) are installed on the Tivoli server on which the adapter will be run.
- Sun Management Center server that you want to connect to is started.
- Check that you are running Sun Management Center 2.1 software. The Sun Management Center-Tivoli adapter is supported only for Sun Management Center 2.1 software.

Limitations of the Adapter

The physical host must be a Sun system: the Sun Management Center server layer runs only under the Solaris operating environment. You must size, configure, and balance your system appropriately to satisfy performance and overall operation requirements of both server layers. Consult the appropriate Sun Management Center and Tivoli documentation for assistance.

▼ Preliminary Preparations

1. **Start the Tivoli server.**
2. **Start the Sun Management Center server: become root, then enter the following commands:**

```
# cd /opt/SUNWsymon/sbin/  
# ./es-start -A
```

3. **Create an administrator at Tivoli's desktop.**

- a. **Start the Tivoli desktop:**

```
# setenv DISPLAY ${hostname}:0.0  
# . /etc/Tivoli/setup_env.sh  
# tivoli &
```

b. Select Administrators icon (FIGURE 1-1).



FIGURE 1-1 Select Administrators Icon

- c. Select the **Create** menu in the window (FIGURE 1-2), then locate the **Create Administrator** window (FIGURE 1-3).



FIGURE 1-2 Select Create Menu

- d. Enter the appropriate information in the Administrator Name, User Login Name, and Group Name fields.

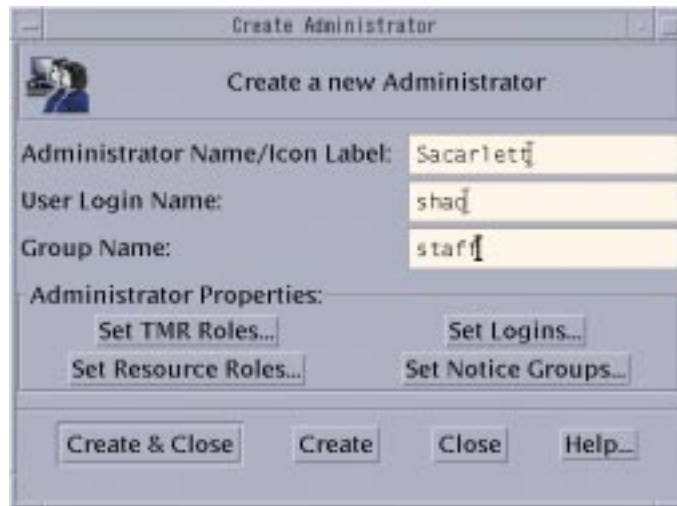


FIGURE 1-3 Create Administrator

- e. Select the Set TMR Roles button to obtain the Set TMR Roles window (FIGURE 1-4). Select admin, senior, and super from Available Roles to Current Roles. Then click Set or Set & Close to validate the settings.



FIGURE 1-4 Set TMR Roles

- f. Select **Set Logins** in the **Create Administrators** window (FIGURE 1-3) to obtain the **Set Login Names** window (FIGURE 1-5). Type the login name in the text field and press **Return** to enter (the login name will be displayed in the **Current Login Names** window). You can also click on the **Remove** button to remove the login names displayed in it. Select the **Set** or **Set & Close** button to validate the **Current Login Names**.



FIGURE 1-5 Set Login Names

- g. Select the **Set Resource Rules** and **Set Notice Groups** buttons in the **Create Administrators** window (FIGURE 1-3) to set corresponding parameters.

Installation Parameters Checklist

The installation script will prompt you for the following information before installing the adapter package:

- *Tivoli adaptor port number*: The default is port 2323, but if that port conflicts with another application using that port, you can specify a different port when prompted.
- *Tivoli Policy Region*: The script will prompt you for the Tivoli Policy Region in which the Sun Management Center Task Libraries should be created. The policy region must already exist or the script will fail.
- *Tivoli Event Server*: Do you wish to restart the Tivoli Event Server? Restarting the Tivoli Event Server is required for the new Sun Management Center rule base to be recognized by Tivoli. If you choose not to have the installation script restart the server, you must restart the server manually before the integration will function correctly.

Note – Be sure that the Tivoli Event Server restarts successfully and without errors. If the Event Server doesn't restart successfully, neither the adapter nor the SyMONInt application can be started by the installation script, and these steps will then need to be performed manually.

- *Tivoli adapter*: Do you wish the installation script to start the Tivoli adapter? If you answer "yes", the adapter will be started by invoking the `$BINDIR/TME/TEC/adapters/bin/tecad_symon` executable.

Note – If the Tivoli adapter does not start successfully, the SyMONInt application cannot be started automatically and you will need to perform these steps manually.

- *SyMONInt startup application*: Do you wish to start the SyMONInt startup application? If you answer "yes" to the prompt, the script `/opt/SUNWsymon/SunMC-Tivoli/sbin/si-start.sh` is run. This application must be running in order for the integration to work correctly, so if you choose not to have the installation script start the application, you must start the application manually.

Note – You will need to restart the SyMONInt startup application after rebooting (or if the process dies or is killed) by manually running `si-start.sh`.

Installation

The `SUNWestia` package can be installed during installation of the Sun Management Center software, or at a later time. If you did not install `SUNWestia` during installation of the Sun Management Center software, you will need to install the package now.

▼ Installing the Adapter Package

1. **Become root.**
2. **Change to the package directory.**
3. **Install the packages:**

```
# pkgadd SUNWestia
```

Watch for error messages, particularly failures of Tivoli commands. Most errors are likely to be permission-related. There is also the possibility of encountering Tivoli-generated errors when compiling the task library or creating and compiling the rule base. While installing, you will be asked some questions:

a. display name?

Enter `hostname:0.0`

b. port number?

The default port number is 2323.

c. region name?

Provide the name of an existing Tivoli region.

d. restart Event Server?

Enter “Y” to restart event server or “No” to refuse it.

e. restart Sun Management Center Adapter?

Enter “Y” to restart Sun Management Center Adapter or “No” to refuse it.

f. restart Java Application?

Enter “Y” to restart Java Application or “No” to refuse it.

During the installation process, the script performs the following actions:

- Copies files from the `SUNWestia` package to
 - `$BINDIR/TME/TEC/adapters`

- /opt/SUNWsymon/SunMC-Tivoli
- Adds the event server's name to the `$BINDIR/TME/TEC/adapters/etc/tecad_symon.conf` file.
- Creates a Tivoli source group for Sun Management Center software.
- Compiles and installs the Sun Management Center task library to the Tivoli Region.
- Creates, compiles, and loads the Sun Management Center rule base to Tivoli.
- If the answers to **restart Event Server?**, **restart SunMC Adapter?**, or **restart Java Application?** are "Y", then the Event Server, Sun Management Center Adapter, and Java Application will be restarted.

Uninstalling

▼ Uninstalling the Adapter

1. To uninstall, become `root` and run the following command:

```
# pkgrm SUNWestia
```

The script will remove any relevant files and stop any active processes.

▼ Deleting the Sun Management Center Task Library

1. If Sun Management Center Task Library is not deleted, you can delete it manually from the Tivoli Console. First, go to the appropriate Policy Region.
2. Select the SunMC Task Library icon.
3. Choose Edit->Delete.

Troubleshooting the Installation

The following suggestions may assist you if you encounter problems with the installation:

- Make sure that Tivoli Framework and TEC server have been installed.
- Make sure that the Sun Management Center Console and Sun Management Center-included Java Runtime Environment (JRE) have been installed.
- Make sure that the Tivoli Event Server is running.
- Make sure that the Sun Management Center server is running.
- Make sure that Region name you have specified exists in the Tivoli server.
- Make sure that the C preprocessor `cpp` exists in `/usr/ccs/lib`.

Additional Help

- Assistance with Tivoli problems may be found at:

`http: //www.support.tivoli.com`

- The online Sun Management Center documentation may be found at:

`http: //www.sun.com/sunmanagementcenter`

Using the Applications

This chapter describes how to start and use the TEC Adapter, the SyMONInt Application, and the Tivoli task. Some troubleshooting suggestions are provided.

Starting the Applications

Both TEC Adapter and SyMONInt Application need to be running for this product to function correctly. The applications can be started either together or separately.

Starting the TEC Adapter and SyMONInt Application Together

Use the `SunMC_Tivoli` command to start TEC Adapter and SyMONInt Application together. The command syntax is:

```
SunMC_Tivoli [ start | stop ] [ -c filename [ -u username ] ] | [ -h ]
```

If no parameters are specified, the SyMONInt GUI will start. The following parameters are optional:

- `-c filename` : read configuration parameters from *filename* to start the TEC Adapter and the SyMONInt Application.
- `-u username` : specify the *username* to be connected to Sun Management Center server. The `-u` parameter may be specified only if the `-c` parameter has been specified.
- `-h` : print usage message for `SunMC_Tivoli`.

▼ Starting the TEC Adapter and SyMONInt Application Together

1. **Become** root.

2. **Move to the** sbin **directory:**

```
# cd /opt/SUNWsymon/SunMC-Tivoli/sbin
```

3. **Run the** SunMC_Tivoli **command:**

```
# SunMC_Tivoli start
```

Starting the TEC Adapter and SyMONInt Application separately

If you are starting the applications separately, the TEC Adapter should be started before the SyMONInt Application is started.

The `tecad_symon` command opens a socket to the SyMONInt Application and accepts Tivoli-ready event strings.

The SyMONInt application retrieves Sun Management Center events from a Sun Management Center server (based on user login and filter input), maps some of the fields into Tivoli equivalents, creates a Tivoli-ready event string and passes that string to the `tecad_symon` Tivoli adapter.

▼ Starting the TEC Adapter

1. **Set the Tivoli environment:**

If you are running the Bourne shell, type

```
. /etc/Tivoli/setup_env.sh
```

If you are running the C shell, type

```
source /etc/Tivoli/setup_env.csh
```

2. **Start the adapter with the following command:**

```
# $BINDIR/TME/TEC/adapters/bin/tecad_symon -l \  
$BINDIR/TME/TEC/adapters/etc/tecad_symon.conf \  
-p Tivoli_adapter_port_number &
```


▼ Starting the SyMONInt Application

1. Change to the `/opt/SUNWsymon/SunMC-Tivoli/sbin` directory.
2. Run `si-start.sh` to start the SyMONInt GUI. This script sets the appropriate environment and invokes the `SyMONInt.class`, which displays the parameter-entry window (FIGURE 2-1).



The screenshot shows a window titled "SunMC-Tivoli Integration" with a "File" menu. The window is divided into two sections: "Required Parameters" and "Optional Parameters".

Required Parameters:

- Username:
- Password:
- SunMC Server:
- Tivoli Server:

Optional Parameters:

- Tivoli Adapter Port Number:
- SunMC Server RMI Port Number:
- Domain to filter on:
- Hostname(s) to filter on (space-separated):
- Alarm State(s) to filter on: Open Closed Fixed
- Acknowledgement State(s) to filter on: Acknowledged Unacknowledged
- Severity State(s) to filter on: Down Irr Error Off Warning Disabled Info

FIGURE 2-1 Sun Management Center-Tivoli Integration

3. Enter information for the mandatory fields and whichever optional fields you wish in the parameter-entry window.
4. Click the File->Save menu to display the File Dialog popup menu. Specify the directory and file name in which to save the current configuration information.
5. Select the File->Start menu choice to connect to the Sun Management Center server.

SyMONInt Startup Parameters

TABLE 2-1 lists the parameters for the Sun Management CenterIntegration window.

TABLE 2-1 SyMONInt Startup Parameters

Parameter	Mandatory/ Optional	Description
Username/Password	Mandatory	Valid Sun Management Center username and its corresponding password
Sun Management Center Server	Mandatory	Hostname of the Sun Management Center server from which you wish to receive events
Tivoli Server	Mandatory	Hostname of the Tivoli server to which you wish to send events
Tivoli Adapter Port Number	Mandatory	Port number for the Tivoli adapter's socket connection with the Sun Management Center integration Java application. The default is 2323, but if you chose a different value at installation time, you must enter that new port number here.
Sun Management Center Server RMI Port Number	Mandatory	Port number at which the Sun Management Center server receives RMI connections. The default is 2099, but if you chose a different value for your Sun Management Center configuration, you must enter that new port number here.

TABLE 2-1 SyMONInt Startup Parameters (Continued)

Parameter	Mandatory/ Optional	Description
Domain to filter on	Optional	If you only want to see Sun Management Center events from a specific Sun Management Center domain, enter that domain name here. The default is to receive events from all Sun Management Center domains set up on the specified Sun Management Center server.
Hostname(s) to filter on	Optional	If you only want to see Sun Management Center events originating from a specific machine, enter those hostnames here, separated by spaces. The default is to receive events from all machines monitored by the specified Sun Management Center server.
Alarm State(s) to filter on	Optional	If you only want to see events in a specific state (Open, Closed, Fixed), check the appropriate boxes. The default is to receive events in both states.
Acknowledgement State(s) to filter on	Optional	If you wish to only see acknowledged or unacknowledged events, check the appropriate box. The default is to receive events in both states.
Severity State(s) to filter on	Optional	If you wish to only see events with specific Sun Management Center severity states, check the appropriate box(es) (refer to the <i>Sun Management Center 2.1 Software User's Guide</i> for additional information about Sun Management Center's severity levels). The default is to receive events in all severity states.

Note – If the “Domain to filter on” and “Hostname(s) to filter on” are set at the same time, the parameter for “Domain to filter on” has higher priority.

Stopping the Applications

Use the `SunMC_Tivoli` command to stop TEC Adapter and SyMONInt Application together.

▼ Stopping the TEC Adapter and SyMONInt Applications

1. **Become root.**
2. **Change to the** `/opt/SUNWsymon/SunMC-Tivoli/sbin` **directory.**
3. **Give the following command:**

```
# SunMC_Tivoli stop
```

Application Tasks

▼ Viewing the Sun Management Center-Generated Events

1. **Start the Tivoli task.**

2. Double-click in the Administrator's Event Console (FIGURE 2-2) to display the Event Sources window(FIGURE 2-3).



FIGURE 2-2 Start Administrator's Event Console

3. Select either the **All** or **SunMC** group choices for event viewing (FIGURE 2-3) to display the Sun Management Center-generated events (FIGURE 2-4).

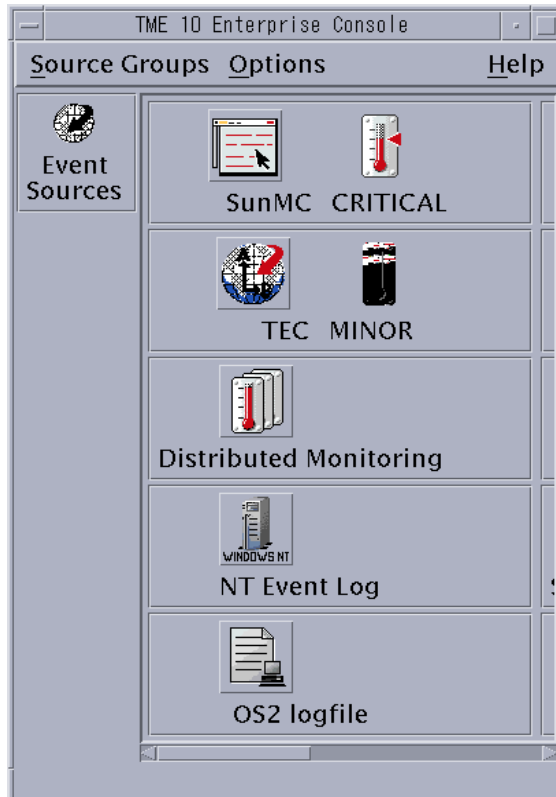


FIGURE 2-3 Select SunMC Group

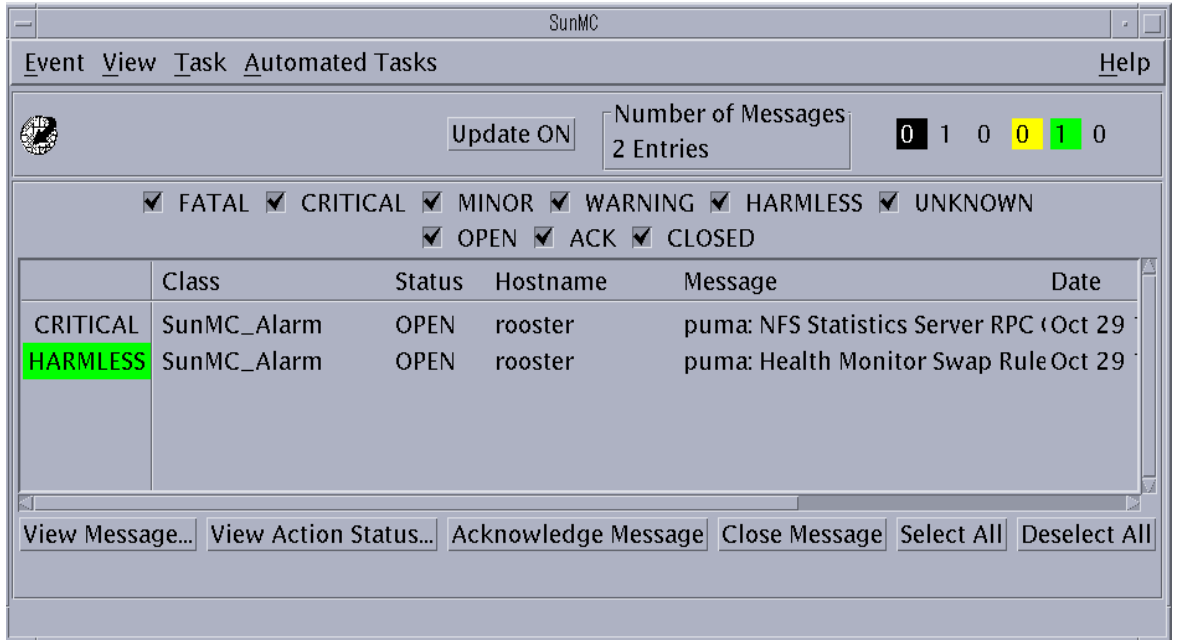


FIGURE 2-4 SunMC-Generated Events

▼ Starting the Hostdetail Task

To view or manipulate the attributes and properties associated with the hosts managed by the Sun Management Center software, run a TEC task to launch the console window containing the host detail information.

1. Select a SunMC-generated event from the event list. Select **Task->Execute on Selected Event** (FIGURE 2-4) to display the **Tasks** window (FIGURE 2-5).

2. Double-click on **SunMC Task Library**, then **Launch SunMC HostDetails** (FIGURE 2-5).

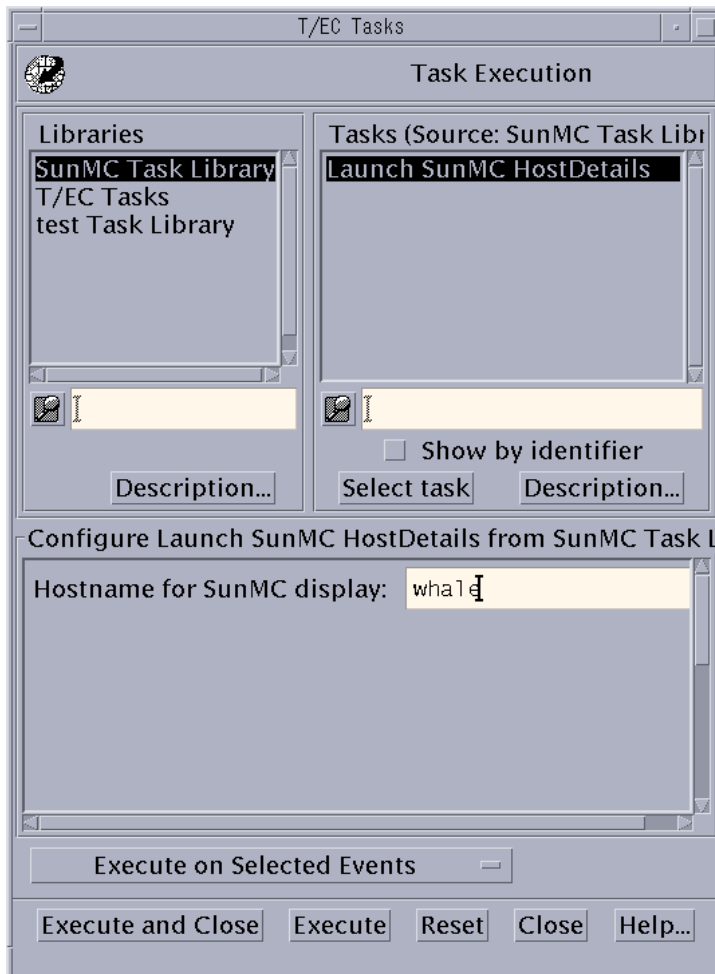


FIGURE 2-5 Launch SunMC HostDetails

3. In response to the prompt for a hostname on which you wish the Sun Management Center windows to be displayed, enter the hostname and click “Execute”. A scaled-down version of the Sun Management Center login screen will appear (FIGURE 2-6).



FIGURE 2-6 Sun Management Center Login Window

4. To display the Host Details window, enter a valid Sun Management Center username and password and select Login. The Host Details window for whichever host you selected (FIGURE 2-7).

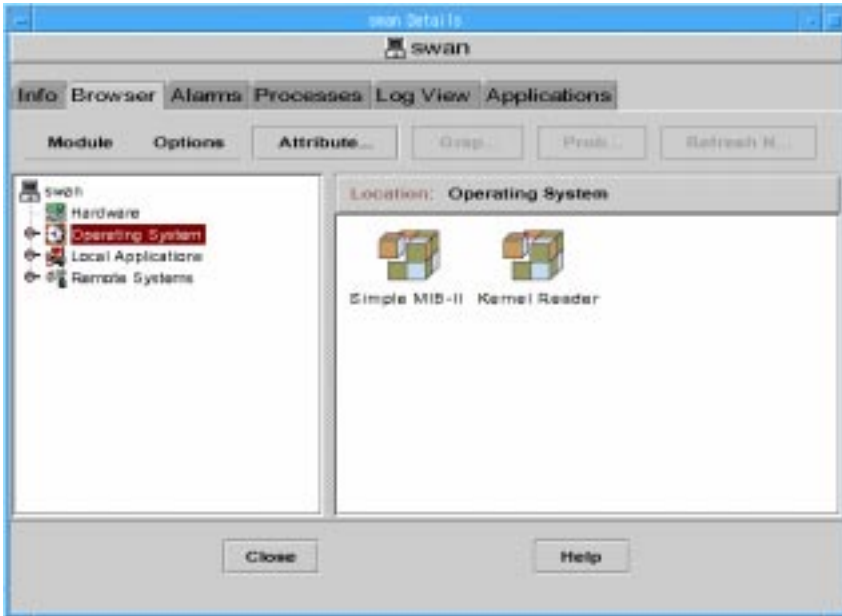


FIGURE 2-7 Host Details Window

Troubleshooting the Applications

TEC Adapter can't successfully startup

- Determine if the TEC server is running
- Determine if the current port number is used.
- Determine if the Tivoli environment has been set correctly. To set the environment correctly, type

```
. /etc/Tivoli/setup_env.sh
```

if running the Bourne shell, or type

```
source /etc/Tivoli/setup_env.csh
```

if you are running the C shell.

SyMONInt can't successfully startup

- Determine that TEC Adapter is running with the following commands:

```
ps - ef | grep tecad_symon  
netstat -a | grep TEC_Adapter_port_number
```

- Determine that the Sun Management Center server is running. The Sun Management Center server's version must be 2.1.
- Determine that the Sun Management Center username and password are valid.
- Determine that the JRE has been installed under `/usr/java1.2/jre`.
- Determine that the Sun Management Center 2.1 console has been installed.

Sun Management Center alarms can't transfer to Tivoli

- Determine that the TEC Adapter and the SyMONInt application are running correctly.
- Determine that the TEC server has been restarted after installation.

- Use the Tivoli `wtdumpr1` and `wtdumper` commands to determine if events are successfully reaching the Console. Depending upon how the time parameters for receiving events are set, it is possible for old, Closed events to reach Tivoli but be discarded because they're Closed and older than the Tivoli server is set to accept.

Can't run Sun Management Center Task Library

- Determine that the current user has `senior`, `user`, and `admin` roles.
- Check the `xhost` permissions for displaying the task from the Tivoli server to the admin machine.
- If you encounter permissions problems when running the task, check the following:

1. Double-click on the icon of the appropriate Policy Region in which the Sun Management Center task library was installed (FIGURE 2-8) to display the Policy Region the window(FIGURE 2-9).



FIGURE 2-8 Select Policy Region

2. Double-click on the SunMC Task Library icon.

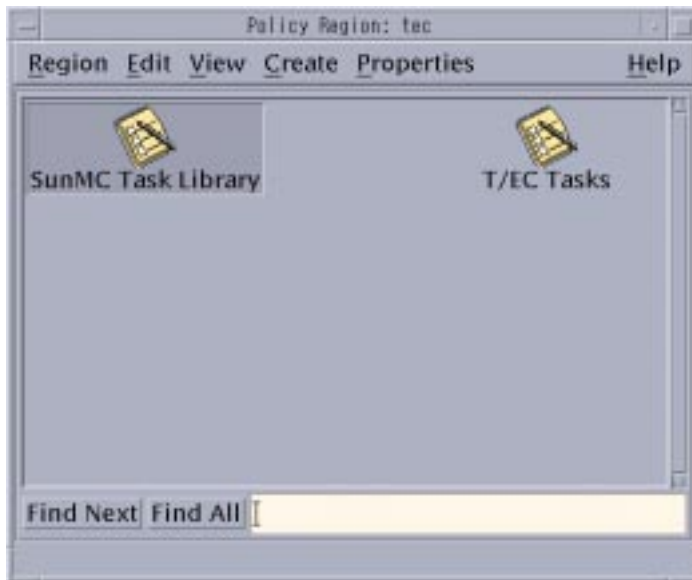


FIGURE 2-9 Select SunMC Task Library

3. Double-click on the SunMC Task Library icon to display the Task Library window (FIGURE 2-10). Right-click on the HostDetails icon and select Edit Task to display the Edit Task window (FIGURE 2-11).

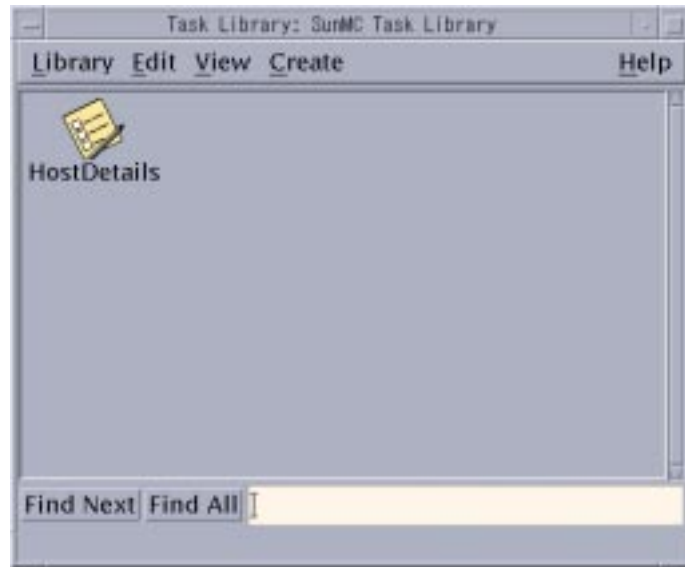


FIGURE 2-10 Get HostDetails Icon

- Determine that Roles Required have admin, senior, and super selected, and that there is an asterisk "*" in both the User Name and Group Name fields (these should already be set, so you should not need to change anything).

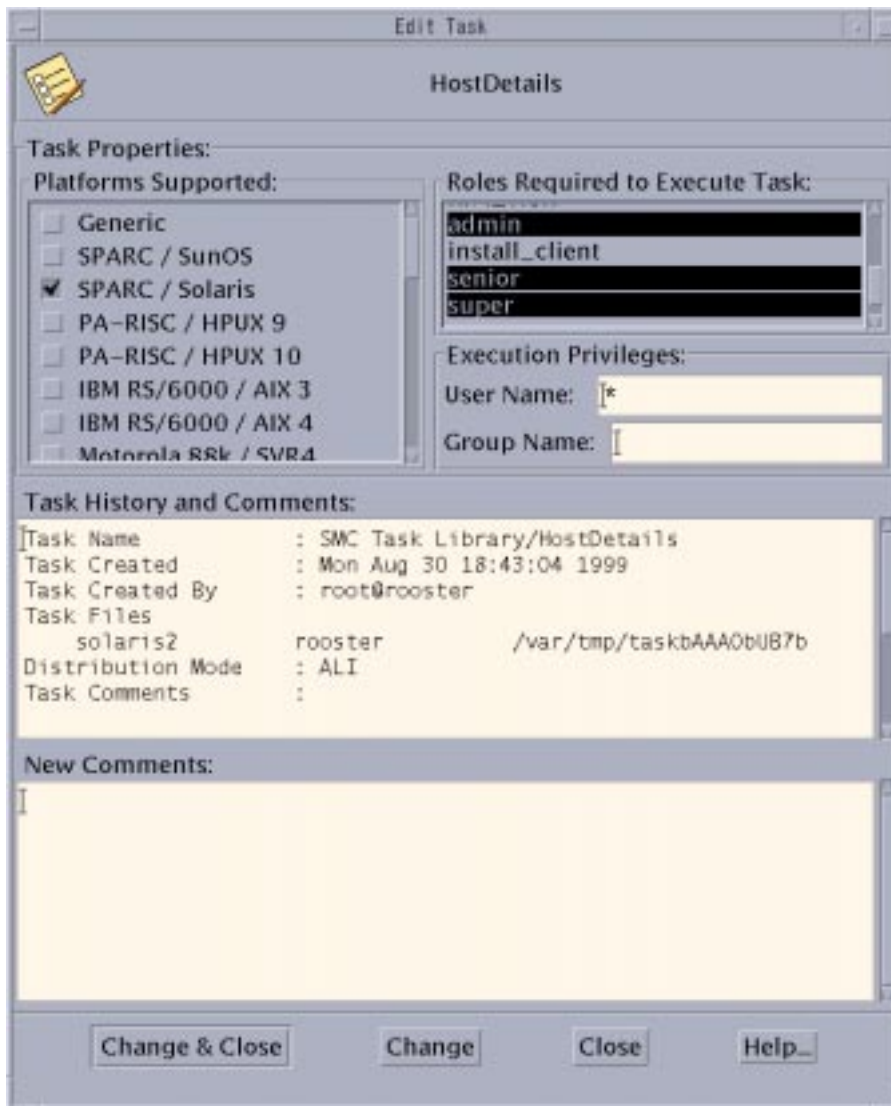


FIGURE 2-11 Edit Task

- Click Change&Close to return to the task.

Can't launch Hostdetail window

Refer to Sun Management Center troubleshooting.

