

Sun StorEdge™ Component Manager 1.0 Installation Guide

For Sun StorEdge™ A5x00 Subsystems



THE NETWORK IS THE COMPUTER™

Sun Microsystems, Inc.
901 San Antonio Road
Palo Alto, CA 94303-4900 USA
650 960-1300 Fax 650 969-9131

Part No. 806-0159-10
June 1999, Revision A

Send comments about this document to: docfeedback@sun.com

Copyright 1999 Sun Microsystems, Inc., 901 San Antonio Road • Palo Alto, CA 94303 USA. All rights reserved.

This product or document is protected by copyright and distributed under licenses restricting its use, copying, distribution, and decompilation. No part of this product or document may be reproduced in any form by any means without prior written authorization of Sun and its licensors, if any. Third-party software, including font technology, is copyrighted and licensed from Sun suppliers.

Parts of the product may be derived from Berkeley BSD systems, licensed from the University of California. UNIX is a registered trademark in the U.S. and other countries, exclusively licensed through X/Open Company, Ltd.

Sun, Sun Microsystems, the Sun logo, Sun StorEdge, AnswerBook, docs.sun.com, and Solaris are trademarks, registered trademarks, or service marks of Sun Microsystems, Inc. in the U.S. and other countries. All SPARC trademarks are used under license and are trademarks or registered trademarks of SPARC International, Inc. in the U.S. and other countries. Products bearing SPARC trademarks are based upon an architecture developed by Sun Microsystems, Inc.

The OPEN LOOK and Sun™ Graphical User Interface was developed by Sun Microsystems, Inc. for its users and licensees. Sun acknowledges the pioneering efforts of Xerox in researching and developing the concept of visual or graphical user interfaces for the computer industry. Sun holds a non-exclusive license from Xerox to the Xerox Graphical User Interface, which license also covers Sun's licensees who implement OPEN LOOK GUIs and otherwise comply with Sun's written license agreements.

RESTRICTED RIGHTS: Use, duplication, or disclosure by the U.S. Government is subject to restrictions of FAR 52.227-14(g)(2)(6/87) and FAR 52.227-19(6/87), or DFAR 252.227-7015(b)(6/95) and DFAR 227.7202-3(a).

DOCUMENTATION IS PROVIDED "AS IS" AND ALL EXPRESS OR IMPLIED CONDITIONS, REPRESENTATIONS AND WARRANTIES, INCLUDING ANY IMPLIED WARRANTY OF MERCHANTABILITY, FITNESS FOR A PARTICULAR PURPOSE OR NON-INFRINGEMENT, ARE DISCLAIMED, EXCEPT TO THE EXTENT THAT SUCH DISCLAIMERS ARE HELD TO BE LEGALLY INVALID.

Copyright 1999 Sun Microsystems, Inc., 901 San Antonio Road • Palo Alto, CA 94303 Etats-Unis. Tous droits réservés.

Ce produit ou document est protégé par un copyright et distribué avec des licences qui en restreignent l'utilisation, la copie, la distribution, et la décompilation. Aucune partie de ce produit ou document ne peut être reproduite sous aucune forme, par quelque moyen que ce soit, sans l'autorisation préalable et écrite de Sun et de ses bailleurs de licence, s'il y en a. Le logiciel détenu par des tiers, et qui comprend la technologie relative aux polices de caractères, est protégé par un copyright et licencié par des fournisseurs de Sun.

Des parties de ce produit pourront être dérivées des systèmes Berkeley BSD licenciés par l'Université de Californie. UNIX est une marque déposée aux Etats-Unis et dans d'autres pays et licenciée exclusivement par X/Open Company, Ltd.

Sun, Sun Microsystems, le logo Sun, Sun StorEdge, AnswerBook, docs.sun.com, et Solaris sont des marques de fabrique ou des marques déposées, ou marques de service, de Sun Microsystems, Inc. aux Etats-Unis et dans d'autres pays. Toutes les marques SPARC sont utilisées sous licence et sont des marques de fabrique ou des marques déposées de SPARC International, Inc. aux Etats-Unis et dans d'autres pays. Les produits portant les marques SPARC sont basés sur une architecture développée par Sun Microsystems, Inc.

L'interface d'utilisation graphique OPEN LOOK et Sun™ a été développée par Sun Microsystems, Inc. pour ses utilisateurs et licenciés. Sun reconnaît les efforts de pionniers de Xerox pour la recherche et le développement du concept des interfaces d'utilisation visuelle ou graphique pour l'industrie de l'informatique. Sun détient une licence non exclusive de Xerox sur l'interface d'utilisation graphique Xerox, cette licence couvrant également les licenciés de Sun qui mettent en place l'interface d'utilisation graphique OPEN LOOK et qui en outre se conforment aux licences écrites de Sun.

CETTE PUBLICATION EST FOURNIE "EN L'ETAT" ET AUCUNE GARANTIE, EXPRESSE OU IMPLICITE, N'EST ACCORDEE, Y COMPRIS DES GARANTIES CONCERNANT LA VALEUR MARCHANDE, L'APTITUDE DE LA PUBLICATION A REpondre A UNE UTILISATION PARTICULIERE, OU LE FAIT QU'ELLE NE SOIT PAS CONTREFAISANTE DE PRODUIT DE TIERS. CE DENI DE GARANTIE NE S'APPLIQUERAIT PAS, DANS LA MESURE OU IL SERAIT TENU JURIDIQUEMENT NUL ET NON AVENU.



Contents

Preface v

1. Installing Sun StorEdge Component Manager 1

Introduction to Sun StorEdge Component Manager 2

Pre-installation Requirements 2

Installing the Software 4

 Running the Installation Script 5

 Verifying the Installation 7

Starting the Sun StorEdge Management Console 8

 Restarting the Software 10

De-installing the Software 11

2. Error Messages 13

InvocationTargetException: Cannot open device 14

 Description 14

 User Action 14

InvocationTargetException: Inappropriate ioctl for device 15

 Description 15

 User Action 15

Preface

The *Sun StorEdge Component Manager Installation Guide* provides instructions for installing the Sun StorEdge™ Component Manager software, verifying the installation, launching the software, and de-installing the software.

How This Book Is Organized

Chapter 1 describes the steps needed to install the software, as well as how to stop and restart the software.

Chapter 2 addresses potential error messages that may require troubleshooting.

Using UNIX Commands

This document may not contain information on basic UNIX® commands and procedures such as shutting down the system, booting the system, and configuring devices.

See one or more of the following for this information:

- AnswerBook™ online documentation for the Solaris™ operating environment
- Other software documentation that you received with your system

Typographic Conventions

TABLE P-1 Typographic Conventions

Typeface	Meaning	Examples
AaBbCc123	The names of commands, files, and directories; on-screen computer output	Edit your <code>.login</code> file. Use <code>ls -a</code> to list all files. % You have mail.
AaBbCc123	What you type, when contrasted with on-screen computer output	% su Password:
<i>AaBbCc123</i>	Book titles, new words or terms, words to be emphasized	Read Chapter 6 in the <i>User's Guide</i> . These are called <i>class</i> options. You <i>must</i> be superuser to do this.
	Command-line variable; replace with a real name or value	To delete a file, type <code>rm filename</code> .

Shell Prompts

TABLE P-2 Shell Prompts

Shell	Prompt
C shell	<i>machine_name%</i>
C shell superuser	<i>machine_name#</i>
Bourne shell and Korn shell	\$
Bourne shell and Korn shell superuser	#

Related Documentation

TABLE P-3 Related Documentation

Application	Title	Part Number
User	<i>Sun StorEdge Component Manager User's Guide</i>	806-0160
Release	<i>Sun StorEdge Component Manager Release Notes</i>	806-0161
Help	Sun StorEdge Component Manager Online Help	

Sun Documentation on the Web

The `docs.sun.comsm` web site enables you to access Sun technical documentation on the Web. You can browse the `docs.sun.com` archive or search for a specific book title or subject at:

`http://docs.sun.com`

Sun Welcomes Your Comments

We are interested in improving our documentation and welcome your comments and suggestions. You can email your comments to us at:

`docfeedback@sun.com`

Please include the part number of your document in the subject line of your email.

Installing Sun StorEdge Component Manager

This chapter contains the following topics for installing the Sun StorEdge Component Manager software:

- “Introduction to Sun StorEdge Component Manager” on page 2
- “Pre-installation Requirements” on page 2
- “Installing the Software” on page 4
- “Starting the Sun StorEdge Management Console” on page 8
- “De-installing the Software” on page 11

Note – You should read this chapter before attempting to install or operate Sun StorEdge Component Manager on a Sun StorEdge A5000, Sun StorEdge A5100, or Sun StorEdge A5200 subsystem. (All supported subsystems are referred to as “A5x00” within this document.)

Introduction to Sun StorEdge Component Manager

Sun StorEdge Component Manager is a graphical interface that enables you to monitor and manage subsystem storage enclosures. Component Manager 1.0 supports Sun StorEdge A5x00 subsystems and operates under the Solaris 2.6 and Solaris 7 operating environments.

Specifically, Sun StorEdge Component Manager provides status monitoring, alarm notification, email and remote service support functionality, and control capability for a single enclosure or multiple Sun StorEdge A5x00 enclosures attached to a single host or multiple Solaris hosts.

Note – This release does not support notification that the A5x00 subsystem is attached to multiple hosts. In the case where the A5x00 loop is split (one half goes to one host and the other half goes to another host), this release can manage only the portion that is visible from the host in which Component Manager is running.

Pre-installation Requirements

Before installing the Sun StorEdge Component Manager software, verify that you have met the following requirements:

- You have allotted enough disk space:
 - /etc — 9K
 - /var — 1686K
 - /usr/opt (or user-specified install location) — 35MB
- The Sun StorEdge A5x00 configuration must be correct (and all the valid `ses` entries for the A5x00 are in the `/dev/es` directory). Refer to the *Sun StorEdge A5x00 Configuration Guide* for more details.
- The required patches are installed for your particular Solaris 2.6 or Solaris 7 operating environment, as indicated in TABLE 1-1 (all patches must be at the specified level or higher).

TABLE 1-1 Sun StorEdge Component Manager Patch Requirements

Solaris Operating Environment	Required Patches for Component Manager ¹	Required Patches for A5x00 ⁴
Solaris 2.6	105181-12 ²	103346-xx
	105210-19	105356-08
	105357-02 ³	105357-02
	105490-07	105375-10
	105568-13	106129-06
	105633-18 105669-07	
Solaris 7	106980-04	103346-xx
	107078-07	106129-06

1. The Sun StorEdge Component Manager installation script (`install_cm.ksh`) checks for these patches during the installation process, and will automatically install these patches if they are not already on your system.
2. Be sure to reboot your system after installing patch 105181-12.
3. Be sure to reboot your system after installing patch 105357-02 (for the SES driver).
4. To download the latest revision level of these patches, refer to the following web site: <http://sunsolve.sun.com>

- You have the correct firmware levels as shown in TABLE 1-2 (all firmware must be at the specified level or higher). Refer to the following web site for the latest A5x00 Software/Firmware Configuration Matrix:

<http://sunsolve.sun.com>

TABLE 1-2 A5x00 Firmware Requirements

Solaris Operating Environment	IB Firmware Level	SBus Host Adapter Firmware Level	Disk Firmware Level	On Board Host Adapter Firmware Level	Required Patches for PCI Bus Host Adapter Firmware
Solaris 2.6	1.08	1.11	14xx (A5000 9GB) 9154 (A5100 18GB) 0728 (A5200 9GB)	1.8.7	105357-02 105375-10 107280-01
Solaris 7	1.08	1.11	14xx (A5000 9GB) 9154 (A5100 18GB) 0728 (A5200 9GB)	1.8.7	None

Installing the Software

1. Load the disc with the label-side facing up into the CD-ROM drive.
2. Mount the CD-ROM drive.
 - a. If the Solaris volume manager daemon (`vold`) is running, the CD-ROM drive should be available at the `/cdrom/cdrom0` mount point. Proceed to Step 3.
 - b. If `vold` is *not* running, create the following mount point and mount the CD-ROM drive by typing:

```
# mkdir /cdrom/cdrom0
# mount -F hsfs -o ro /dev/dsk/cXtXdXsX /cdrom/cdrom0
```

Where `cXtXdXsX` is the device node of the CD-ROM (for example, `c0t6d0s0`) and `/cdrom/cdrom0` is the mount point.

3. Change directories to the Sun StorEdge Component Manager directory for your particular Solaris environment.

If you are running Solaris 2.6:

```
# cd /cdrom/cdrom0/Sol_2.6
```

If you are running Solaris 7:

```
# cd /cdrom/cdrom0/Sol_7
```

4. Run the `install_cm.ksh` script, and answer the questions when prompted (see “Running the Installation Script” on page 5):

```
# ksh ./install_cm.ksh
```

Running the Installation Script

The following installation session is an example of the output you will see and the questions you will be asked when running the `install_cm.ksh` script under the Solaris 2.6 operating environment.

CODE EXAMPLE 1-1 Example Installation Session

```
StorEdge Component Manager 1.0

This product provides a graphical interface to the monitoring and configuring
of the A5000 storage enclosure. It is assumed that you agree to legal terms
explained in
    http://www.sun.com/share/text/SMICopyright.html

DO YOU AGREE TO THE ABOVE TERMS AND WISH TO INSTALL THIS ON TO YOUR SYSTEM?

Do you agree to the above license terms? [yes or no]
yes
Checking for required patch 105357-02
Checking for required patch 105490-07
Checking for required patch 105210-19
Checking for required patch 105568-13
Checking for required patch 105181-12
Checking for required patch 105633-18
Checking for required patch 105669-07

This product and the execution platform are installed into /usr/opt

An install log can be found at
/var/tmp/Component_Manager_install.log.02Jun1999-17:09:07

Starting installation of Platform packages.

Installation of <SUNWj2rt> was successful.

Installation of <SUNWesm> was successful.

Installation of <SUNWmjacf> was successful.

Installation of <SUNWmjmai> was successful.

Installation of <SUNWmjhlp> was successful.

Installation of <SUNWdaert> was successful.

Installation of <SUNWesmru> was successful.
```

CODE EXAMPLE 1-1 Example Installation Session (Continued)

```
Installation of <SUNWesmrt> was successful.

Starting installation of Component Manager packages.

Installation of <SUNWencl> was successful.

Installation of <SUNWencm> was successful.

Installation of <SUNWencc> was successful.

Installation of <SUNWencu> was successful.

Installation of <SUNWencmr> was successful.

Installation of <SUNWenccr> was successful.

Installation of StorEdge Component Manager was successful.
StorEdge Component Manager daemons are now starting .....
/usr/opt/SUNWesm/sbin/esm_moboot start
/usr/opt/SUNWesm/sbin/esm_mcboot start
/usr/opt/SUNWesm/sbin/esm_em_moboot start
Start loading Component Manager specific managed objects...
..Done loading Component Manager specific managed objects...
/usr/opt/SUNWesm/sbin/esm_em_mcboot start
Start loading Component Manager specific management classes...
..Done loading Component Manager specific management classes...

Done.
An un-install script has been generated to aid in the removal of this
software.
The location of the un-install script is:
    /var/tmp/uninstall_component_mgr
```

Verifying the Installation

You can verify your installation by looking at the log file from the `install_cm.ksh` script, which is located in `/var/tmp`:

```
Component_Manager_install.log.date-time
```

The installation script also starts the management stations. You can verify that these stations are running by entering the following commands:

```
# /usr/opt/SUNWesm/sbin/esm_moboot status  
# /usr/opt/SUNWesm/sbin/esm_mcboot status
```

If the return code of these commands is 0, then the stations are running.

Note – After successful installation, a de-installation script named `uninstall_component_mgr` is automatically created and placed in the `/var/tmp` directory.

Starting the Sun StorEdge Management Console

1. **Become root.**
2. **Start the Sun StorEdge Management Console:**

```
# /usr/opt/SUNWesm/bin/esm_gui &
```

The following figure provides an example of the main console window.

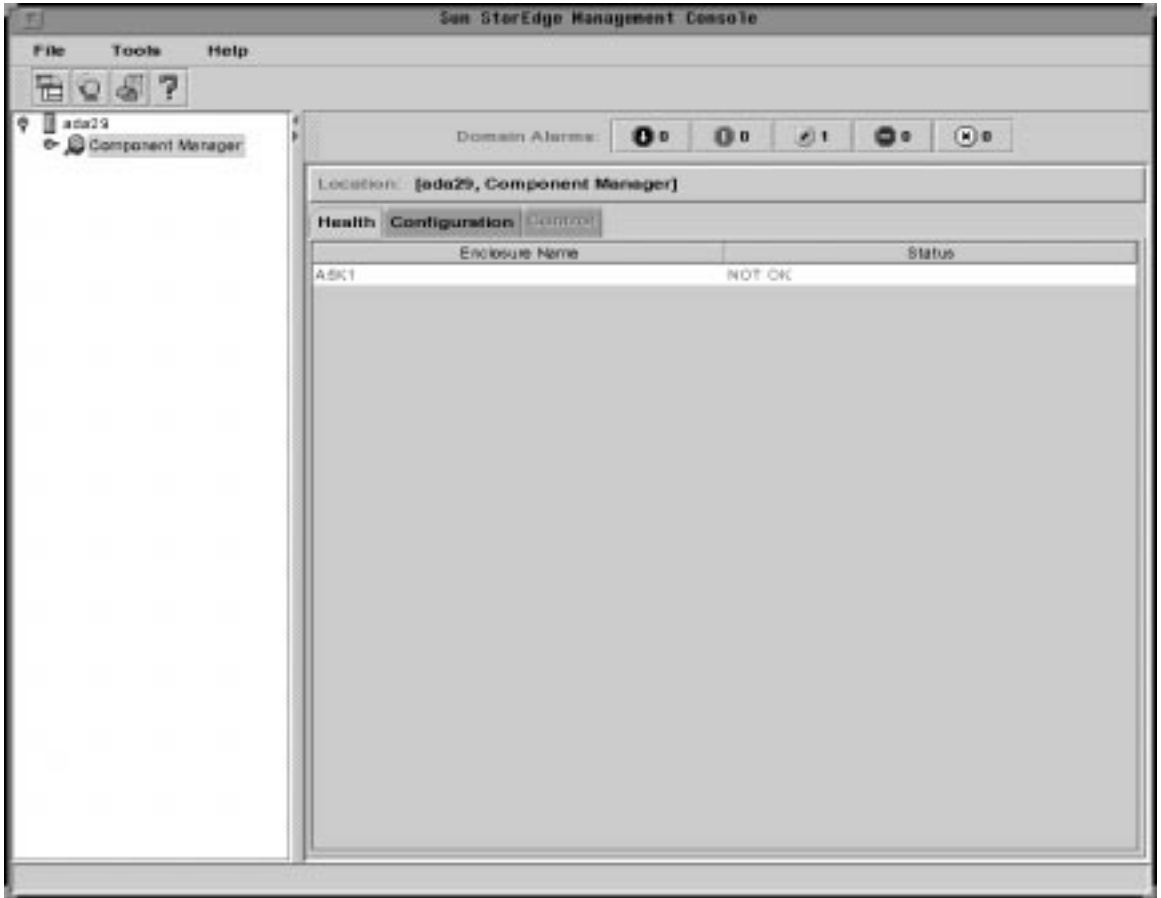


FIGURE 1-1 Sun StorEdge Management Console

Restarting the Software

Use the following steps to stop and restart the management stations if the software fails to start automatically.

Note – The steps below must be performed in the order shown.

1. **Become root.**

2. **Stop any currently running management class and managed object stations:**

```
# /usr/opt/SUNWesm/sbin/esm_mcboot stop
# /usr/opt/SUNWesm/sbin/esm_moboot stop
```

3. **Start the managed object station:**

```
# /usr/opt/SUNWesm/sbin/esm_moboot -v start
```

Wait until you see the following message before proceeding to the next step:

```
"MOBoot: INFO: realm "StoreX" on station "MOStation" - booted"
```

4. **Start the management class station:**

```
# /usr/opt/SUNWesm/sbin/esm_mcboot -v start
```

Wait until you see the following message before proceeding to the next step:

```
"MCBoot: INFO: realm "StoreX" on station "MCStation" - booted"
```

5. **Type the following commands:**

```
# /usr/opt/SUNWesm/sbin/esm_em_moboot start
```

```
# /usr/opt/SUNWesm/sbin/esm_em_mcboot start
```

6. Start the Sun StorEdge Management Console:

```
# /usr/opt/SUNWesm/bin/esm_gui &
```

De-installing the Software

If you need to de-install the Sun StorEdge Component Manager software, perform *either* Step 1 or Step 2 below.

1. If available, run the following script:

```
# /var/tmp/uninstall_component_mgr
```

2. If the script is unavailable, use the `pkgrm` command to de-install the software.

a. Remove the Sun StorEdge Component Manager packages in the following order:

```
# pkgrm SUNWencu SUNWencr SUNWencs SUNWencm SUNWencn
```

b. Remove the other platform packages in the following order:

```
# pkgrm SUNWesmru SUNWesmrt SUNWdaert SUNWmjhlp SUNWmjmai  
SUNWmjacf SUNWesm SUNWj2rt
```

Note – If the `uninstall_component_mgr` script is available, you do not need to run any `pkgrm` commands. Use `pkgrm` *only* if the `uninstall_component_mgr` script is unavailable.

The following de-installation session is an example of the output you will see and the questions you will be asked when running the `uninstall_component_mgr` script.

CODE EXAMPLE 1-2 Example De-installation Session

```
An uninstall log can be found at
/var/tmp/Component_Manager_uninstall.log.02Jun99-17:05:20

Do you want to remove StorEdge Component Manager? [yes or no]
yes
Removal of <SUNWencr> was successful.
Removal of <SUNWencmr> was successful.
Removal of <SUNWencu> was successful.
Removal of <SUNWencc> was successful.
Removal of <SUNWencm> was successful.
Removal of <SUNWencl> was successful.

Do you want to remove the Platform? [yes or no]
yes
Removal of <SUNWesmrt> was successful.
Removal of <SUNWesmru> was successful.
Removal of <SUNWdaert> was successful.
Removal of <SUNWmjhlp> was successful.
Removal of <SUNWmjmai> was successful.
Removal of <SUNWmjacf> was successful.
Removal of <SUNWesm> was successful.
Removal of <SUNWj2rt> was successful.
```

You can verify your de-installation by looking at the log file from the `uninstall_component_mgr` script, located in `/var/tmp`:

```
Component_Manager_uninstall.log.date-time
```

Error Messages

This chapter addresses potential error messages that may require troubleshooting:

- “`InvocationTargetException: Cannot open device`” on page 14
- “`InvocationTargetException: Inappropriate ioctl for device`” on page 15

InvocationTargetException: Cannot open device

```
java.lang.reflect.InvocationTargetException Cannot open device /dev/es/ses**
```

Description

Bad and/or outdated device entries are located in the `/dev/es` directory.

User Action

Clear the `/dev/es` tree by removing old device entries. Reboot the host with *either* of the following commands.

From the open boot prompt:

```
ok boot -r
```

Or from root:

```
# touch /reconfigure; init 6
```

InvocationTargetException: Inappropriate ioctl for device

```
java.lang.reflect.InvocationTargetException
    Inappropriate ioctl for device

java.lang.reflect.InvocationTargetException:
com.sun.esm.library.encl.LibenclException: Inappropriate ioctl for device at
com.sun.esm.library.encl.SESElement.SESElementproxy_get_elements(Native
Method)
    at com.sun.esm.library.encl.SESElement.getElements(Compiled Code)
    at com.sun.esm.mo.a5k.A5kEnclMOImpl.fetchSubelements(Compiled Code)
    at com.sun.esm.mo.ses.SESEnclMOImpl.<init>(Compiled Code)
    at com.sun.esm.mo.a5k.A5kEnclMOImpl.<init>(Compiled Code)
    at com.sun.esm.mo.host.HostMOImpl.discoverEnclosures(Compiled Code)
    at com.sun.esm.mo.host.HostMOImpl.<init>(Compiled Code)
    at java.lang.reflect.Constructor.newInstance(Native Method)
    at com.sun.esm.mo.MOBootstrap.initiateMO(Compiled Code)
    at com.sun.esm.mo.MOBootstrap.instantiateMO(Compiled Code)
    at com.sun.esm.mo.MOBootstrap.<init>(Compiled Code)
    at com.sun.esm.mo.MOBoot.boot(Compiled Code)
    at com.sun.esm.mo.MOBoot.main(Compiled Code)
MOBoot: WARN: problem while instantiating Managed Objects
MOBoot: INFO: invocation target exception on class
com.sun.esm.mo.host.HostMOImpl com.sun.esm.library.encl.LibenclException:
Inappropriate ioctl for device
```

Description

Inappropriate ioctl for device message appears when starting the Component Manager daemons. This is the result of the SES driver patch not being installed, or the SES driver is not loaded into the kernel.

User Action

Be sure the SES driver patch is installed if you are running the Solaris 2.6 operating environment. Refer to “Pre-installation Requirements” on page 2 for all required patch IDs. If you are certain the SES driver patch has already been installed, reboot your system to ensure that the driver is loaded into the kernel.

